

CHAPTER III

RESULT AND DISCUSSION

3.1 Intrinsic elements

3.1.1 Character

3.1.1.1 Emily

Emily Cooper is a marketing executive from Chicago in her 20s, decided to relocate to Paris after her company, Gilbert Group, acquired a French marketing company. Leaving her life in Chicago behind, Emily embarks on a journey to pursue her dream job in Paris, where she stands out with her daring fashion choices and lively personality. Throughout her time in the city, she goes through personal and professional growth, embracing her life as an outsider and forming various romantic connections and friendships.

Emily's character exemplifies the challenges faced by individuals adapting to a new social setting. Her experiences underscore the significance of cultural awareness and social skills in forming relationships and acclimating to a different social environment. Emily's problem in Season 1 began when her colleagues in Paris discovered that she was a substitute employee who couldn't speak French. As a result of the stark differences in perspectives and marketing approaches between the two countries. Sylvie, her leader in Paris, consistently adopted a tough demeanour and exhibited a sense of aversion towards her presence.

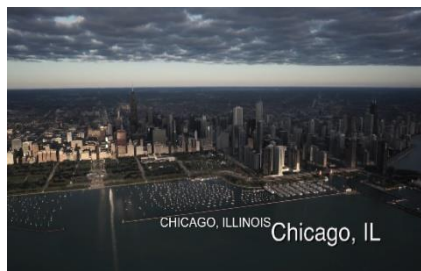
Emily's behavior shows that Emily is a woman who is brave, responsible, confident, independent and creative. This can be seen when she is faced with various urgent situations, Emily always has a way to handle these situations. Like when she was given the responsibility of preparing dinner with clients. Where at that time the restaurant they were going to was full and no longer providing space. Swiftly, Emily immediately contacted Gabriel (her best friend) to prepare a special place and menu at the restaurant where Gabriel worked so that the client would not feel disappointed.

Emily's way of speaking is calm but also firm and enthusiastic can make people who listen to her opinion believe in all the decisions Emily makes. Emily is able to make her opinion or ideas sound convincing, especially when the boss/client asks for Emily's opinion in a meeting. Proof for Emily's character can be seen across the whole episode on season 1 of *Emily in Paris*.

3.1.2 Setting

3.1.2.1 Setting of Place

There are two countries used in this series, the first one being United States of America to be more specific, Illinois, Chicago for small bit at the start of the series where it shows Emily's old work and romantic life before Paris, and the second one being France, to be more specific, Paris where the rest of the series took place. Most of Emily's life throughout season 1 is revolving around Paris. See picture 3.1 & 3.2.



Picture 3.1 Chicago, Illinois



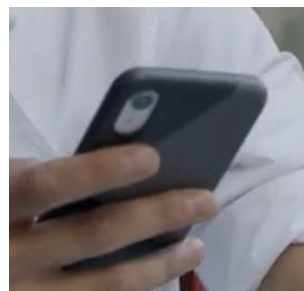
Picture 3.2 Paris, France

3.1.2.2 Setting of Time

Although this series does not specifically say as to what year, based on Emily's phone is an iPhone X or XS which can be seen by the oval shaped camera while she took a selfie and Gabriel's phone, an iPhone XR, which can be seen by the singular circle shaped camera when he is holding, it can be assumed that this series took time in 2018 and above. This assumption is based on the use of Emily's Instagram account and the device that Emily used throughout the series. As for the setting of time, this series used a mix setting of time. The story tells Emily's daily activity throughout the day from the moment she woke up to the time where she went to bed. See picture 3.3 & 3.4.



Picture 3.3 Emily's iPhone X/XS



Picture 3.4 Gabriel's iPhone XR

3.1.3 Conflict

Emily's American perspective is quickly rejected when she faces challenges in earning the respect of her colleagues Luc, Julien, and Sylvie while carrying out her job. However, things ease when she befriends Mindy Chen, a passionate woman with experience in America, who understands Emily's struggles. On top of that, her neighbour and the handsome chef, Gabriel, becomes an even closer confidant after she breaks up with her Chicago boyfriend, Doug.

While her social life becomes more manageable, her work life becomes more chaotic as Emily unintentionally steps on Sylvie's toes. This becomes even more complicated when Antoine Lambert shows interest in Emily, despite being married and having Sylvie as his mistress. To mitigate the tension between the company leaders, Emily elevates her professional efforts, earning a modicum of respect from Sylvie. With newfound confidence, Emily decides to take a bold step in her personal life and kisses Gabriel.

Understanding the language is crucial when someone from one country visits another. The lack of intercultural communication often results from limited language comprehension. This is evident in the scene where Sylvie greets Emily in French, and Emily appears confused about how to respond since she doesn't understand what Sylvie is saying.

3.2 Factors of culture shock

According to Rese on page 15 there are three factors of culture shock, those are the disappearance of indications or signs that he recognizes, interpersonal

communication breakdown, which causes dissatisfaction and worry, and lack of self-control and an identity crisis.

One of the three factors that happens to Emily is language barrier. This factor causes Emily to have a hard time adapting to her new life in Paris. The language barrier affects Emily so much since her main job-desk on Paris is to communicate and connect her marketing company with the customers. In several scenes are proven where Emily caused misunderstanding regarding what she is meant to say because she often combines English and French into one sentences, for example when she falsely said *excitée* because she thought it meant excited just like in English.

Another misunderstanding happens when she tries to speak French and the meaning is completely different than what she actually wanted to say, for example when she tried to order the food with Mindy, she said she want to order condoms. Emily usually responds with a simple smile and explains that she does not speak French in English.

3.2 Extrinsic elements

3.2.1 Factors of culture shock

According to Rese on page 15 there are three factors of culture shock, those are the disappearance of indications or signs that he recognizes, interpersonal communication breakdown, which causes dissatisfaction and worry, and lack of self-control and an identity crisis.

One of the three factors that happens to Emily is language barrier. This factor causes Emily to have a hard time adapting to her new life in Paris. The language barrier affects Emily so much since her main job-desk on Paris is to communicate and connect her marketing company with the customers. In several scenes are proven where Emily caused misunderstanding regarding what she is meant to say because she often combines English and French into one sentences, for example when she falsely said *excitée* because she thought it meant excited just like in English.

Another misunderstanding happens when she tries to speak French and the meaning is completely different than what she actually wanted to say, for example when she tried to order the food with Mindy, she said she want to order condoms. Emily usually responds with a simple smile and explains that she does not speak French in English.

3.2.2 Stages of culture shock

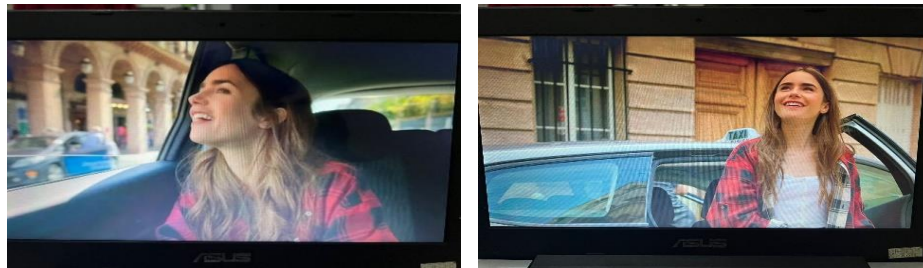
3.2.2.1 Honeymoon phases

The first honeymoon phase happens as soon as Emily set foot on Paris where she's smiling wherever she goes. This is in line with Ward's definition of honeymoon phase on page 13.

Taken with a close-up shot and medium shot, this scene proves how happy Emily is when she first arrived in Paris. Emily smiled non-stop with her surroundings. This statement is proven in many scenes where Emily, with her excitement and happiness welcomes her new place of living, one of the example is

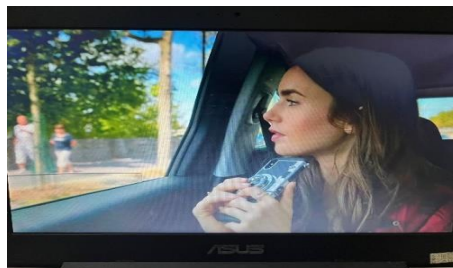
Emily's smile never fades away from her face once while she's in the car being driven to her new apartment. She looked at the streets of Paris with such happiness.

See picture 3.5, 3.6 & 3.7.



Picture 3.5 & 3.6 Emily smiling through-out her trip from the airport to her apartment
(Series *Emily in Paris*, Episode 1 Season 1: 4:14 – 4:50)

Based on the picture 3.5 and 3.6, we can see that Emily's smiling throughout her journey from the airport to her apartment. This proves Ward's definition of honeymoon phase on page 13.



Picture 3.7 Emily taking pictures with her phone
(Series *Emily in Paris*, Episode 1 Season 1: 4:27 – 4:30).

Based on the picture 3.7, we can see that Emily is excitedly taking pictures of the scenery with her phone. This further prove Ward's statement on page 13.

Taken with two-shot, this next scene also proofs Emily's happiness. Despite not having a lift or elevator in Emily's new apartment, she is still very much excited about living there even after knowing she lives in high floor and got told that her

room was meant to be a janitor's room. This also proves that despite having inconvenience, Emily's still being very grateful and excited to be there. See picture 3.8.

Gilles: "The building is very old. It does not have an elevator."

Emily: "Okay. It's **charming**."

(Series *Emily in Paris*, Episode 1 Season 1: 5:16 – 5:22)



Picture 3.8 Emily is amazed with the apartment she lives in
(Series *Emily in Paris*, Episode 1 Season 1: 5:16 – 5:22)

Based on the dialogue above and picture 3.8, we can see Emily is excited even after knowing her apartment did not have a lift. Emily's excitement and amazement is proven by the word "charming".

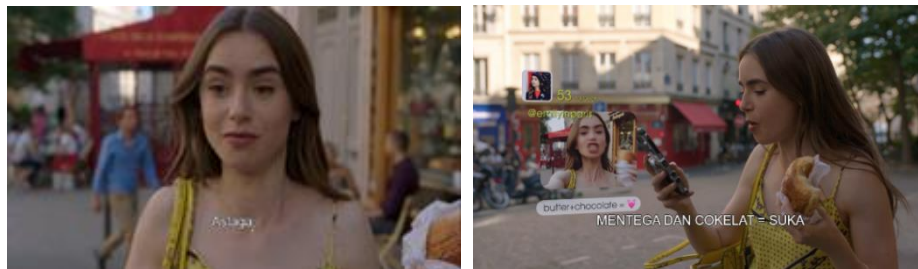
The next example is when she's just simply walking to her new office, she still smiles and enjoy every step of her way there. This scene was taken with a full-shot. See picture 3.9 & 3.10.



Picture 3.9 & 3.10 Emily smiling all the way from her apartment to her new office, Savoir
(Series *Emily in Paris*, Episode 1 Season 1: 7:46 & 7:53).

Based on the picture 3.9 & 3.10, we can see that Emily is smiling all the time when she first got into her new office. Emily started her first day on the office with excitement and positive mindset.

The next scene which taken with a close-up shot, proofs that Emily's amazement and admiration towards the *pain au chocolat*'s flavor that she bought on her way to her new office which again proofs Ward's first culture shock theory: the honeymoon phase. See picture 3.11 & 3.12.



Picture 3.11 & 3.12 Emily had a shock while eating a *pain au chocolat* and later posting it on her Instagram account
(Series *Emily in Paris*, Episode 1 Season 1: 16:27 – 16:36).

Based on the picture 3.11 & 3.12, we can see Emily had a shock while eating a *pain au chocolat*, and her expression says it all, she was amazed by how it tasted. This scene proves Ward's statement on how a person felt the joy of experiencing new things, in this case, new food.

3.2.2.2 Crisis Phases

Taken with two-shot technique, this phase started with Emily learning the French floor numbering system. Initially, she was unaware that the second floor counts as the first floor while the first floor is considered to be the ground floor. As

a result, she accidentally entered the apartment of someone else, with whom she fortunately made friends. See picture 3.13.

Emily: “C’mon! “

She BANGS on the door in frustration.

Emily: “I don’t believe this!”

Suddenly, the door swings open, and a great-looking shirtless thirty-something man, Gabriel, flings open the door. They stare at each other a moment. Silent attraction.

Emily: “(taken aback) Sorry, I thought this was... my apartment... fifth floor...”

Gabriel: “**(points up) Fifth floor.**”

Emily: “Right. *Merci. Bonsoir.*”

(Series *Emily in Paris*, Episode 1 Season 1: 14:45 – 14:56)



Picture 3.13 Emily mistaken her room for someone else’s
(Series *Emily in Paris*, Episode 1 Season 1: 14:45 – 14:56)

Based on the dialogue and the picture 3.13, we can see that Emily’s first experience in crisis phase is mistaken her room for someone else’s. This happens for several other times in another episode. This is the start of Emily’s crisis phase as stated by Ward in page 13 where someone will start to feel the anxiety of the difference in culture.

Emily’s failure to learn French prior to her Paris trip is proven to be her next fatal error. As a result, when she got to work, she had to speak to a co-worker using *Google Translate’s text-to-speech* feature. Lucky for Emily, her boss at Savoir understand fluent English. However, outside of workspace, Emily had issues

because she could not speak French. This scene is taken with two-shot and over-the-shoulder shot. See picture 3.14 & 3.15.

Emily: “Hi - hello - *bonjour* - I’m Emily Cooper. From the Gilbert Group. In Chicago.”

He hangs up. Looks at her quizzically.

Julien: “*Eh bon?*”

Emily: “(louder) Emily Cooper. From Chicago.”

Julien: “You are? I’m sorry I don’t understand...”

Emily speaks into her phone.

Emily: “I’m going to be working in this office.”

She then turns the phone towards Julien. A female synthesized voice translates.

Computer Voice: “*Je vais travailler dans ce bureau.*”

Julien reacts, as if struck. He presses the intercom on his phone.

Julien: “(whispers) *La fille Américaine est là.*”

He looks at Emily, up and down. Like she’s from Mars.

(Series *Emily in Paris*, Episode 1 Season 1: 8:21 – 8.27)



Picture 3.14 & 3.15 Emily using google translate to communicate
(Series *Emily in Paris*, Episode 1 Season 1: 8:21 – 8.27)

Based on the dialogue above and picture 3.14 & 3.15, we can see that Emily is using Google Translate text-to-speech to communicate with her new co-worker. Emily did this because of her inability to not only speak but also understand French. This is Emily’s biggest problem in France since she did not learn the French language prior to arriving in Paris.

In addition, according to Luc, Emily's co-worker, Luc told Emily she was speaking too loudly during their initial meeting. As a result, Emily learnt that French people do not speak too loudly and lowers her voice. This scene is taken with two-shot. See picture 3.16.

Emily: "For those of you who haven't met me, I'm Emily Cooper, and I'm so excited to be here in Paris. I'm looking forward to getting to know each and every one of you and likewise, having you get to know me. Your name, *monsieur*? [Your name, sir?]"

Luc: "My name is Luc."

Emily: "Yes, Luc?"

Luc: "**Why are you shouting?**"

Emily: "[sighs, quietly] Sorry."

Luc: "Mm..."

(Series *Emily in Paris*, Episode 1 Season 1: 11:51 – 11:56)



Picture 3.16 Luc complained about Emily shouting
(Series *Emily in Paris*, Episode 1 Season 1: 11:51 – 11:56)

Based on the dialogue above and picture 3.16, we can see that at the start of the meeting, Emily is making sure the whole room heard what she says by shouting. This proves as one of the difference in culture between American and French.

Her next encounter happened as she was purchasing a *pain au chocolat*. Although she made some mistakes, she tried to speak a little bit of French. Fortunately, the seller taught her the proper way of speaking the sentence out of kindness. This scene is taken with two-shot technique. See picture 3.17 & 3.18.

Emily: “Uh...ah... [slowly] *une pain au chocolat*. [chocolate bread.]”
 Shopkeeper: “*Un pas “une”. un pain au chocolat*. [A not “one” chocolate bread.]”
 Shopkeeper: continues “*Ça sera tout?* [That will be all?]”
 Emily did not respond because she did not understand what the shopkeeper was saying
 Shopkeeper: “*Un euro quarante*. [One euro forty.]”
 Shopkeeper: continues “*Eh ben, on n’est pas rendu*. [Well, we’re not done.]”
 Emily: “*Merci*, have *un bonne journée*. [Thank you, have a good day.]”
 Shopkeeper: “*Une! pas “un”*. [A! not “one”.] *Une bonne journée!* [A good day!]”
 (Series *Emily in Paris*, Episode 1 Season 1: 15:45 – 16:14)



Picture 3.17 & 3.18 Emily got corrected by the shopkeeper
 (Series *Emily in Paris*, Episode 1 Season 1: 15:45 – 16:14)

Based on the dialogue above and picture 3.17 & 3.18, we can see that Emily is slowly tries using several French phrases but it was still wrong, so she got corrected by the lady at the bakery. This further prove Ward’s statement on crisis phase based on page 13.

In one scene, she tried to speak French and the meaning is completely different than what her actually meant due to the language barrier. See picture 3.19.

Emily: “[Chuckles] Bonjour. I am *très excitée* to be here. [I am very horny to be here.]”
 Antoine: “*Excitée?* [Horny?] Really?”
 Julien: “Um... “*excitée*” does not mean excited. It means horny.”
 Emily: “Oh, well, not that, then. [chuckles]”

Sylvie: “Well, you’ll have to excuse her. She washed her hair in the bidet this morning. [Sighs]”

(Series *Emily in Paris*, Episode 3 Season 1: 06:56 – 07:04)



Picture 3.19 Emily said the wrong sentence

(Series *Emily in Paris*, Episode 3 Season 1: 06:56 – 07:04)

Based on the dialogue above and picture 3.19, we can see that Emily said that she is “*excitée*” to be there, she thought *excitée* means excited but the real meaning is “horny” which is not what she actually meant. This proves Ward’s statement based on the crisis phase definition on page 13.

In another scene, she can place a food order in French, but she makes a hilarious and fatal mistake. Despite this, she continues to speak English with her French friends. See picture 3.20.

Emily: “*Um, J’aime le café, les fruits, et un croissant avec le préservatif.* [Um, I like coffee, the fruits, and a croissant with the condom.]”

Server: “[sighs] Okay, there’s a vending machine for that in the men’s room.”

Mindy: “[chuckles]”

Emily: “What did I just say?”

Mindy: ““**Préservatif**” doesn’t mean preserves. You just ordered a croissant with a side of condoms.”

Emily: “Oh, my God! No, I don’t want that!”

Mindy: “She’s gonna bareback her breakfast!”

(Series *Emily in Paris*, Episode 5 Season 1: 00:54 – 01:15)



Picture 3.20 Emily ordered her food with a side of condom
(Series *Emily in Paris*, Episode 5 Season 1: 00:54 – 01:15)

Based on the picture 3.20 and dialogue above, we can see that Emily ordered some food and in the process she said she ordered *préservatif* which what she was not actually meant, luckily her friend understood her and helped her correct her sentence.

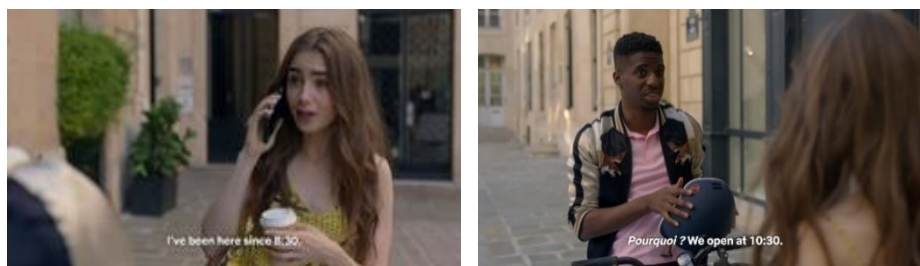
Lastly, she arrived at work so early that nobody had opened the door yet. This happens because she's still on her old habit where office usually opens at 9 o'clock in the United States. She arrived two hours prior to the opening of the office at 10:30. Her fellow co-worker also thinks Emily is a bit of a workaholic. Even Emily's supervisor at *Savoir*, Sylvie, advised her to calm down a bit and avoid bringing up work during social gatherings. This scene is taken with medium shot, two-shot, and over-the-shoulder shot. See picture 3.21 & 3.22

Julien: “What are you doing?”

Emily: “I've been here since 8:30.”

Julien: “*Pourquoi?* [Why?] **We open at 10:30.**”

(Series *Emily in Paris*, Episode 1 Season 1: 17:01 – 17:18)



Picture 3.21 & 3.22 Emily's co-worker explained that the office opened on 10.30 o'clock

(Series *Emily in Paris*, Episode 1 Season 1: 17:01 – 17:18)

Based on the picture 3.21 & 3.22, and dialogue above, we can see that Emily is still used to her American habit where people usually went to office at 9 o'clock whereas in Paris, the office usually opens at 10 o'clock. Emily arrived at savoir at 8:30 which is 2 hours before the office opens. This proves the cultural differences between America and French.

The next problem that Emily had is when she is on the party with Sylvie. Sylvie's comment on Emily should not talk about work at a party which can be seen in Episode 2 of season 1. This scene is taken with two-shot. See picture 3.23 & 3.24.

Sylvie: "Are you crazy? You don't talk about work at a party?"

Emily: "He asked me."

Sylvie: "Well, then you change the subject. You know, we're at a *soirée* [we're at an evening party], not a conference call. Oh, *mon dieu!* [Oh, my god!]"

Sylvie sighs

Emily: "[Sighs]"

(Series *Emily in Paris*, Episode 2 Season 1: 06:47 – 06:51)



Picture 3.23 & 3.24 Emily got told off by Sylvie for talking about work on parties (Series *Emily in Paris*, Episode 2 Season 1: 06:47 – 06:51)

Based on the picture 3.23 & 3.24, and dialogue above, we can see that Emily is enthusiastically talked about Antoine Lambert’s achievement that apparently Sylvie disagreed on speaking about work on parties. This is also proven Wards definition of crisis phase on page 13 where the person will experience anxiety and difficulties because of the difference in norms and habit.

3.2.2.3 Recovery Phases

Emily’s first recovery phase step is that Emily started to adjust by responding to her co-worker’s jokes towards her with sassiness with apparently Parisian liked. This scene is taken with medium shot. See picture 3.25 & 3.26

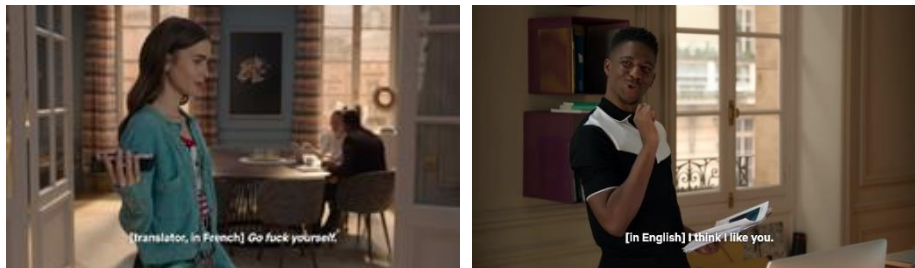
Julien: “*Bonjour, la plouc.*”

Emily types in her phone

Translator Voice in French: “*va te faire foutre* [Go fuck yourself]”

Julien: “[chuckles] I think I like you.”

(Series *Emily in Paris*, Episode 2 Season 1: 02:26 – 02:31)



Picture 3.25 & 3.26 Emily starts to talk back after being disrespected which made her co-worker started to like her
(Series *Emily in Paris*, Episode 2 Season 1: 02:26 – 02:31)

Based on the picture 3.25 & 3.26, and dialogue above, we can see that Emily's responds with sassiness to her co-worker calling him "La Plouc" which means "hick" and her co-worker responded positively. This is scene proves that Emily is slowly tries to adapt towards French culture which is sarcastic-humor. This scene proves Ward's statement on recovery phase based on page 14.

The second thing that Emily did was she handled Parisian's rudeness and insolent behavior excellently without doing any revenge. The good thing about Emily is that her response is trying to prove people around them that their judgment towards her are false. Most of the time, Emily responds to Parisian's rudeness and insolent behavior with a smile. This scene is taken with medium shot and two-shot. See picture 3.27.



Picture 3.27 Emily simply smiling after being insinuated
(Series *Emily in Paris*, Episode 3 Season 1: 07:13 – 07:17)

The previous statement is also proven where Emily gracefully and calmly responded on the next several seconds which taken with close-up shot and over-the-shoulder shot. See picture 3.28.



Picture 3.28 Emily simply smiling although she has been disrespected
(Series *Emily in Paris*, Episode 3 Season 1: 18:25)

The third thing that Emily did was she's slowly learning to manage herself better than before by going to the market and does her shopping all by herself. This scene is taken with various shots like full-shot, medium shot, and two-shot. See picture 3.29 & 3.30.



Picture 3.29 & 3.30 Emily started to explore the city starting with going to the market
(Series *Emily in Paris*, Episode 2 Season 1: 16:17 – 16:36)

Based on the picture 3.29 & 3.30, we can see that Emily went to the street market and shops many food, one of the most notable food in this scene is cheese. Pictures 3.27 to picture 3.30 it can be seen that Emily slowly tries to adapt herself to all of her problems. This proves Ward's statement on recovery phase on page 14.

Brigitte Macron reposted Emily's Instagram post is another thing that made her excited and accepted by her co-workers including Sylvie, Emily's supervisor. The news spreads quickly all around the office including to her co-worker's ear, right away she was getting asked to have lunch together where before, no one would want to get lunch with Emily. With this scene, adjustment phase in Emily's Parisian life has just started. This scene is taken with medium close-up shot. See picture 3.31 & 3.32.



Picture 3.31 & 3.32 Emily's first reaction to her successful Instagram post that got reposted by Brigitte Macron and Emily's first lunch with her co-workers (Series *Emily in Paris*, Episode 2 Season 1: 23:31 – 24:19)

Based on the picture 3.31 & 3.32, we can see that Emily's first reaction knowing that Brigitte Macron just reposted her post and soon after she got invited to eat lunch with her co-workers. This is the end of Emily's recovery phase and an entry towards Emily's adjustment phase where her co-workers actually realizes her capability for the company.

3.2.2.4 Adjustment Phases

This is the phase where Emily starts to use French quite a bit. While in Paris, she always communicates with the locals who have a wider and diverse knowledge of French vocabulary. As a result, she gradually starts to understand French better.

From only understanding what people said to her, slowly until she tried to speak a full sentence in French. See picture 3.33.

Emily: “Mm-hmm. I wanted you to be the first to see it. I’m calling it ‘*Dormir à la belle étoile.*’”

Camille: “Mm! “To sleep under the stars.” Emily, your French is getting better.”

Emily: “Well, that’s because I have French friends now.”

(Series *Emily in Paris*, Episode 5 Season 1: 23:30)



Picture 3.33 Camille said that Emily’s French is getting better
(Series *Emily in Paris*, Episode 5 Season 1: 23:30)

Based on the picture 3.33 and the dialogue above, we can see that Emily’s French is slowly getting better as proven on episode 5 where she started to give title for her work with a French phrase. This starts Emily’s adjustment phase where she starts to gain back her confidence. This scene proves Ward’s definition on adjustment phase based on page 15.

Other than that, Emily also gains an understanding of Sylvie's attitude and learns how to handle her. Sylvie starts to show more kindness towards Emily. Emily demonstrates her ability to attract more customers for *Savoir*, even the big ones like Randy Zimmer, the owner of Hotel Zimmer and on a later episode, and Pierre Cadault, a famous fashion designer in France. This scene is taken with over-the-shoulder shot. See picture 3.34.

Sylvie: “Emily... I have to say that you did a good job today.”
Emily: “Look, Sylvie, I want us to win together. And maybe some things get lost in translation, but... just... just know that I’m finding my way.”
Sylvie: “We’re going for drinks. You can join us if you want, but I think you have better things to do.”

(Series *Emily in Paris*, Episode 4 Season 1: 23:16 – 23:40)



Picture 3.34 Sylvie started to loosen up on Emily
(Series *Emily in Paris*, Episode 4 Season 1: 23:16 – 23:40)

Based on the picture 3.34, and dialogue above, we can see that Sylvie’s loosen the tension between her and Emily after an important dinner between *Maison Lavaux* and *Hotel Zimmer*. The loose tension can be seen in the way Sylvie talk to Emily and the tone that she used where before it would be full of anger.

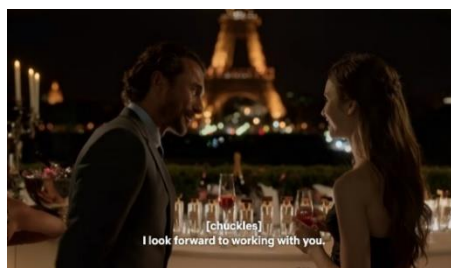
Besides her work at *Savoir*, she is also a social media influencer. When she is in Paris, her followers on social media always grow bigger. That's why she is always invited to gatherings involving social media influencers. This shot is taken with medium shot. See picture 3.35.



Picture 3.35 Sylvie started to loosen up on Emily
(Series *Emily in Paris*, Episode 5 season 1: 02:48 & 05:56)

Based on the picture 3.35, we can see that Emily got invited into a social-media-influencer gathering for *Durée*. This proves Emily's ability in gaining info and attracting customers to Savoir.

With her marketing creativity, she opens a window of opportunity and it brings her to a lot of places like knowing important people. Some of those important people are Antoine Lambert, famous French perfume brand owner, Randy Zimmer, big hotel group owner, Olivia Thompson, CEO of *Durée* a cosmetic company, and Pierre Cadault, a famous fashion designer in France. This shot is taken with two-shot. See picture 3.36.



Picture 3.36 Emily gained Antoine Lambert's contact because he is interested in working with Emily
(Series *Emily in Paris*, Episode 2 Season 1: 09.35 – 09.37)

Based on the picture 3.36, we can see that Emily got Antoine Lambert's contact in the party. Which later on, successfully made a deal with Savoir.



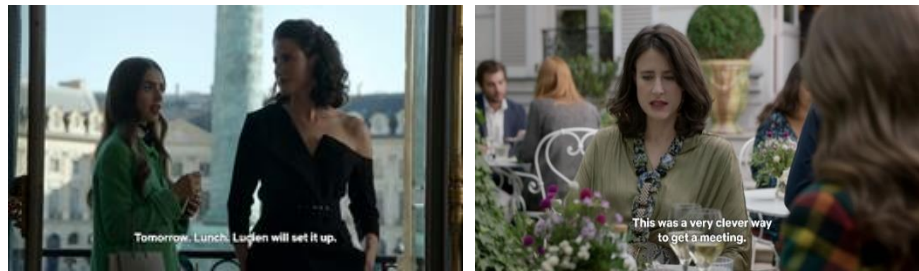
Picture 3.37 & 3.38 Emily gained Randy Zimmer's contact to become Savoir's potential customer
(Series *Emily in Paris*, Episode 4 Season 1: 13:00 – 13:47),

Based on the picture 3.37 & 3.38, taken with two-shot, we can see that Emily got Randy Zimmer's contact on the gallery to talk about a potential new customer. Which later on, also successfully made a deal with Savoir.



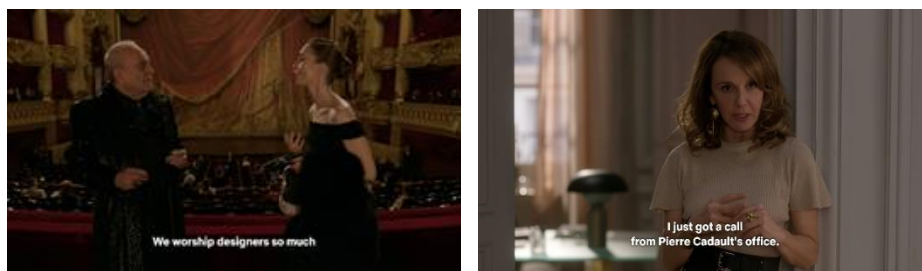
Picture 3.39 Emily, the man behind Zimmer Hotel and Maison Lavaux's successful collaboration
(Series *Emily in Paris*, Episode 4 Season 1: 14:42 – 15:59)

Based on the picture 3.39, taken with over-the-shoulder shot, and medium shot, we can see that Emily become the person behind Zimmer Hotel and Maison Lavaux's successful collaboration.



Picture 3.40 & 3.41 Emily set up a meeting to attract *Durée* to be Savoir's customer once again
(Series *Emily in Paris*, Episode 5 Season 1: 09:37 & 15:08)

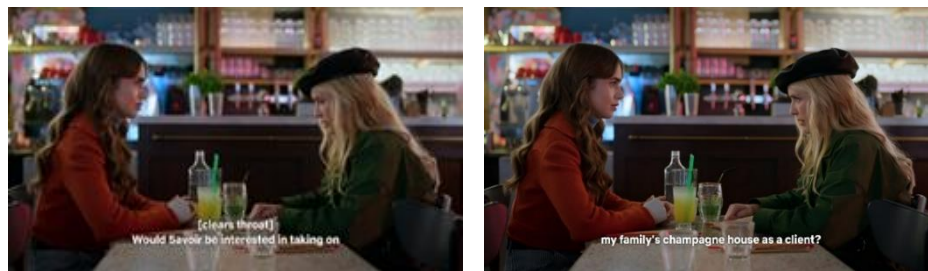
Based on the picture 3.40 & 3.41, taken with two-shot and over-the-shoulder shot, we can see that Emily got Olivia Thompson, *Durée*'s CEO to do a meeting for a potential customer.



Picture 3.42 & 3.43 Pierre Cadault is interested to join Savoir for the first time ever thanks to Emily
(Series *Emily in Paris*, Episode 6 Season 1: 24:38 - 26:17 & 26:42)

Based on the picture 3.42 & 3.43, taken with two-shot and medium close-up shot, we can see that Emily got news from Sylvie that Pierre Cadault would like to use her agency to expand their marketing for the first time.

Other than famous or important people, Emily also got the chance of helping Camille, Emily's roommate's girlfriend, to take her family's champagne house as a client to increase their sales. See picture 3.44 & 3.45.



Picture 3.44 & 3.45 Camille asked Emily to make her family's champagne house to be Savoir's customer
(Series *Emily in Paris*, Episode 8 Season 1: 02:34 – 02:58)
Based on the picture 3.44 & 3.45, taken with two-shot, we can see that Camille asking Emily would Savoir like to take Camille's family champagne house as their client.