



**OBSESSIVE – COMPULSIVE PERSONALITY
DISORDER OF ROB HOYLE AS THE MALE
CHARACTER IN *BEHIND HER EYES* (2021) NOVEL
ADAPTATION TO LIMITED SERIES**

A THESIS

**In Partial Fulfillment of the Requirements for S-1 Degree Majoring
Literature in the English Department, Faculty of Humanities
Diponegoro University**

Submitted by:

Lintang Galuh Savitri

13020118120043

**FACULTY OF HUMANITIES
DIPONEGORO UNIVERSITY
SEMARANG**

2023

PRONOUNCEMENT

The writer honestly states that this thesis was written by herself without taking any work from any research either in S-1, S-2, S-3 or diploma degree. The writer also does not take material from any work except from the references mentioned by the writer.

Semarang, 9 January 2023

A handwritten signature in black ink, consisting of a large 'G' followed by several loops and a horizontal line, representing the name Lintang Galuh Savitri.

Lintang Galuh Savitri

MOTTO AND DEDICATION

“Keep progressing even if little rather than nothing”

- **Lintang**

*This thesis is dedicated to my beloved family,
my friends, and myself
who always gave me a prayer, support
and motivation in writing this thesis.*

APPROVAL

OBSESSIVE – COMPULSIVE PERSONALITY DISORDER OF ROB HOYLE AS
THE MALE CHARACTER IN *BEHIND HER EYES* (2021) NOVEL
ADAPTATION TO LIMITED SERIES

Written by:

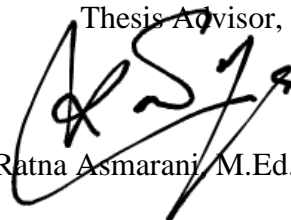
Lintang Galuh Savitri

13020118120043

Approved by Thesis Advisor

on 9 January 2023

Thesis Advisor,



Dr. Ratna Asmarani, M.Ed., M.Hum.

NIP. 196102261987032001

The Head of the English Department,



Dr. Drs. Oktiva Herry Candra M.Hum.

NIP. 196710041993031003

VALIDATION

Approved by

Strata 1 Final Project Examination Committee

Faculty of Humanities Diponegoro University

On 10 February 2023

Chair Person



Drs. Jumino, M.Lib, M.Hum

NIP. 196207031990011001

First Member



Ariya Jati, S.S, M.A

NIP. 197802282005021001

ACKNOWLEDGMENTS

Alhamdulillah praise to Allah SWT, who has given me convenience and guidance so that I can finish this thesis entitled ‘Obsessive – Compulsive Personality Disorder of Rob Hoyle as the Male Character in *Behind Her Eyes* (2021) Novel Adaptation to Limited Series’. This will be a valuable journey and experience for me. Besides, I would like to thank the universe that has supported me by sending me people who gave me support and advice while I was finishing this thesis. My most sincere gratitude and appreciation are extended to Mrs. Dr. Ratna Asmarani, M.Ed., M.Hum. as my thesis advisor, who always takes the time to provide me with valuable guidance, helpful corrections, support, and advice in completing this thesis. In addition, I also want to express my gratitude to the following people:

1. Dr. Nurhayati M.Hum as the Dean of the Faculty of Humanities, Diponegoro University.
2. Dr. Drs. Oktiva Herry Candra M.Hum as Head of the Department of English Literature, Faculty of Humanities, Diponegoro University.
3. All lecturers in the Department of English Literature, Diponegoro University. Thank you very much for giving the knowledge and experience.
4. My beloved parents, Ibu and Bapak, thank you for the support and suggestions. Thank you so much for giving various views on life that cannot be forgotten.

5. My lovely grandma, Mamak, thank you for the prayers and support that has been given.
6. My Pumpkin, thank you for accompanying me in every process until this moment and thank you for everything that cannot be expressed in many words that I am grateful to have you.
7. My college besties; Salsabila, Meme, Alin, Nisrina, Fira, Hany, Astia, Kiki, Yuli. Thank you for giving colorful and memorable days while on campus.
8. My Senior High School mates; Erika, Deby, Intan, Atika. Thank you for giving valuable lessons in friendship and giving support in completing this thesis.

I realize that this thesis is far from being perfect, but I will accept criticism and suggestions wisely so that this thesis can be better. Finally, the writer hopes this thesis will be useful for everyone who wants to read and learn about obsessive-compulsive personality disorder.

TABLE OF CONTENT

PRONOUNCEMENT	i
MOTTO AND DEDICATION	ii
APPROVAL.....	iii
VALIDATION	iv
ACKNOWLEDGMENTS	v
TABLE OF CONTENT	vii
LIST OF PICTURES	x
ABSTRACT.....	xi
CHAPTER I	1
1.1 Background of the Study	1
1.2 Research Problem.....	3
1.3 Objective of the Study	3
1.4 Previous Studies	3
1.5 Scope of the Study.....	6
1.6 Writing Organization.....	6
CHAPTER II.....	7
2.1 Theoretical Framework	7
2.1.1 Intrinsic Element	7
2.1.1.1 Narrative Element.....	7
2.1.1.1.1 Character	8
2.1.1.1.2 Conflict	8
2.1.1.1.3 Setting	9
2.1.1.2 Cinematography	9
2.1.1.2.1 Color	10
2.1.2 Extrinsic Aspect	10
2.1.2.1 Psychoanalysis.....	10
2.1.2.1.1 The Id.....	10

2.1.2.1.2	The Ego.....	11
2.1.2.1.3	The Superego	12
2.1.2.2	Mental Disorder.....	12
2.1.2.2.1	Personality Disorder	12
2.1.2.2.1.1	Obsessive-Compulsive Personality Disorder	13
2.1.2.2.1.1.1	The Symptom.....	13
2.1.2.3	Astral Projection.....	13
2.2	Research Method.....	14
2.2.1	Data Source	14
2.2.2	Data Collection.....	14
2.2.3	Data Analysis	15
CHAPTER III	16
3.1	Intrinsic Element	16
3.1.1	Narrative Element	16
3.1.1.1	Character	16
3.1.1.1.1	Rob Hoyle.....	16
3.1.1.1.2	Adele Ferguson	18
3.1.1.2	Conflict.....	20
3.1.1.2.1	Internal Conflict.....	20
3.1.1.2.1.1	Rob’s Disappointments	20
3.1.1.2.1.2	Rob and David’s Affection	22
3.1.1.2.1.3	Rob’s Jealousy.....	23
3.1.1.2.2	External Conflict.....	24
3.1.1.2.2.1	Social Conflict.....	25
3.1.1.3	Setting.....	25
3.1.1.3.1	Setting of Place	26
3.1.1.3.1.1	Campbell House	26
3.1.1.3.1.2	David Ferguson’s Private Residence.....	26
3.1.1.3.1.3	Louise’s Apartment	27
3.1.1.3.1.4	Bar	27
3.1.1.3.1.5	Ironmonger Row Baths	28

3.1.1.3.2	Setting of Time	28
3.1.1.3.3	Social Setting	29
3.2	Extrinsic Aspect	30
3.2.1	Psychoanalysis	30
3.2.1.1	The Id Experienced by Rob Hoyle	30
3.2.1.2	The Ego Experienced by Rob Hoyle	32
3.2.1.3	The Superego Experienced by Rob Hoyle	34
3.2.2	Obsessive-Compulsive Personality Disorder	35
3.2.2.1	The Symptoms of Obsessive-Compulsive Personality Disorder Experienced by Rob Hoyle	35
3.2.2.1.1	The Symptom of Rob’s Work Devotion.....	36
3.2.2.1.2	The Symptom of Rob’s Saving the Unessential Thing.....	36
3.2.2.1.3	The Symptom of Rob’s Stubbornness	37
3.2.3	The Astral Projection Method Finally Abuse by Rob Hoyle.....	37
CHAPTER IV	40
REFERENCES	42

LIST OF PICTURES

Picture 1: Rob Appearance	17
Picture 2: Rob Visits Adele's House.....	18
Picture 3: Adele's Appearance.....	18
Picture 4: Rob Took Money from Ailsa's Wallet	20
Picture 5: Rob and David Put the Chicken into the Oven.....	23
Picture 6: Rob and David in the Dining Room	23
Picture 7: Rob's Confession in Adele's Body	24
Picture 8: Rob and Other People Doing the Transaction	25
Picture 9: Adele's Parent House	26
Picture 10: A Room Full of Paintings.....	26
Picture 11: Adele with Rob's Soul and David's House	27
Picture 12: Louise's Apartment	27
Picture 13: Louise Met David at A Bar.....	28
Picture 14: Rob in Adele's Body and Louise at Ironmonger Row Baths	28
Picture 15: Campbell's House.....	29
Picture 16: Ferguson's House Interior	29
Picture 17: David Goes to Work	29
Picture 18: David Back Home After Working All Day	29
Picture 19: Rob's Family Condition	30
Picture 20: Ferguson's House Interior	30
Picture 21: Rob in Adele's Body Having Dinner	31
Picture 22: Rob in Adele's Body Eats a Pill	31
Picture 23: Rob in Adele's Body Sings a Song	31
Picture 24: Rob in Adele's Body is Swaying.....	31
Picture 25: Rob in Adele's Body and David Do the Sexual Activities.....	32
Picture 26: Rob in Adele's Body is Sleeping in Her Bed	33
Picture 27: Rob in Adele's Body Throws the Pills in the Sink.....	33
Picture 28: Rob and Adele is Lying.....	34
Picture 29: Rob in Adele's Body Holds the Gym Equipment	36
Picture 30: Rob in Adele's Body Saves the Useless Stuff.....	37
Picture 31: Rob in Adele's Body Talks with Louise	37
Picture 32: Their Souls have Swapped	39

ABSTRACT

This research discusses the male character who experiences obsessive-compulsive personality disorder in the limited series entitled *Behind Her Eyes* (2021), directed by Steve Lightfoot based on Sarah Pinborough's novel. This research applies psychoanalysis (id, ego, superego), the symptoms of obsessive-compulsive personality disorder, and astral projection abuse. This research uses the library research method to collect the data from printed and non-printed media to support the analysis. This study also uses the contextual method to describe it descriptively. The research in this study applies the qualitative method. The results shows that the male character in this study is experiencing mental disorder as can be seen in the id, ego, and superego analysis. The symptoms are work devotion, saving the unessential things, and stubbornness. The male character also abuses the astral projection to get what he secretly wants.

Keywords: *obsessive, personality disorder, obsessive-compulsive personality disorder, psychoanalysis, astral projection*

CHAPTER I

INTRODUCTION

1.1 Background of the Study

Nowadays, there are several methods to express ideas through the media. Mini-series is one kind of media that may be used to express ideas (limited series). A limited series is a collection of US television shows that can attract a larger audience than television movies (White, 1985: 41).

Many people experience various types of psychological problems. According to Diedrich and Voderholzer, obsessive-compulsive personality disorder is a mental illness that causes sufferers to exhibit extremely detailed behavior toward something, always keep the things that they think are useful, and to be stubborn (Diedrich and Voderholzer, 2015: 1).

People with obsessive-compulsive personality disorder may appear to be very talented, self-assured, warm, and organized. They have a standard of rigor that can benefit them in specific professions (Rowland, T. A., Jainer, A. K., & Panchal, R. 2017; 41(6): 366 - 367). This research focuses on obsessive-compulsive personality disorder presented by the male character in the mini-series entitled *Behind Her Eyes*. There is a scene showing that Rob Hoyle as the male character has several symptoms as proof. In this mini-series, the mental disorder brought on by Rob Hoyle becomes the center of the writer's analysis of this mini-series.

The writer is interested in identifying and discussing this research because Rob Hoyle's obsessive-compulsive personality disorder affects the id, ego, and superego of the character, and also the abuse of the astral projection method. This male character has an obsession with something that the writer will identify based on the psychoanalysis with the help obsessive-compulsive personality disorder and astral projection. This reason is quite interesting for the writer because the writer can learn more about what happened to this male character.

Behind Her Eyes tells a person named Rob Hoyle. This man met Adele in the psychiatric ward, and they quickly became close friends. After they both recovered from their rehabilitation, Adele introduced David, her lover who is a psychiatrist to Rob Hoyle. Adele began to trust Rob so completely and they became closer to one another. After some time, Rob begged Adele to perform a body exchange due to some reason, and Rob tricked Adele. Adele's husband, David, is unaware of it. Until one day David got tired of Adele. Then, he began a new life with his new love, and this situation is repeated.

In this research, the writer takes the title “Obsessive-Compulsive Personality Disorder of Rob Hoyle as the Male Character in *Behind Her Eyes* (2021) Novel Adaptation to Limited Series” by applying several theories and elements of literature. Later, the writer hopes that the readers will receive more insights and know the symptoms in real life from the male character about obsessive-compulsive personality disorder that have analyzed by the writer.

1.2 Research Problem

The research problems to discuss as follows:

1. What are the id, ego and superego experienced by Rob Hoyle as the male character in *Behind Her Eyes* (2021)?
2. What are the symptoms of obsessive-compulsive personality disorder that occur in Rob Hoyle as the male character in *Behind Her Eyes* (2021)?
3. How is the astral projection method finally abused by Rob Hoyle as the male character in *Behind Her Eyes* (2021)?

1.3 Objective of the Study

The objective of the study as follows:

1. To analyze the id, ego, and superego of Rob Hoyle in *Behind Her Eyes*.
2. To analyze the obsessive-compulsive personality disorder symptoms of Rob Hoyle in *Behind Her Eyes*.
3. To analyze the astral projection method finally abused by Rob Hoyle in *Behind Her Eyes*.

1.4 Previous Studies

The writer did not find the same object as the previous studies in *Behind Her Eyes* (2021). The writer finds journal article related to this study. The first study comes from McClure (2007) article entitled *Astral Projection Techniques*. McClure writes about the definition and what kinds of the projection such as mental projection, astral projection, etheric projection, bilocation, and the astral projection techniques or

method. The second study comes from Priya and Jain (2021) article entitled *The Potentials of Subconscious Mind*. Priya and Jain writes about subconscious mind or dreams psychology, that drives to the vivid dreams, déjà vu, jamais vu, astral projection, and body possessions. The third study comes from DeGracia (1997) article entitled *Paradigms of Consciousness During Sleep*. DeGracia writes about the nature of consciousness experience which occur during sleep, and comparing the lucid dreaming, out-of-body experience, and astral projection from the perspective of history and science. The fourth study comes from Fineberg et al. (2007) article entitled *Does Obsessive-Compulsive Personality Disorder belong within the Obsessive-Compulsive Spectrum*. Fineberg et al. writes about terms of phenomenology, comorbidity, neurocognition, and treatment response about obsessive-compulsive personality disorder that is similar to obsessive-compulsive disorder and other spectrum disorders. The fifth study comes from Blanke (2016) article entitled *Leaving Body and Life Behind: Out-of-body and Near-Death Experience*. Blanke writes about functional mechanism insight from beliefs, concept, personality, spirituality, magical thinking of near-death experience. The writer finds two thesis that related to this study. The sixth study comes from Hartawan's (2019) thesis entitled *The Reflection of Rob Hoyle's Obsessive Love toward David Martin in Sarah Pinborough's Novel Behind Her Eyes*. Hartawan writes about an analysis of intrinsic and extrinsic elements regarding Rob's obsessive love. The seventh study comes from Zahra's (2021) thesis entitled *The Reflection of Parasomnia (Night Terrors and Sleepwalking) and Lucid Dreaming That Leads to Out-Of-Body*

Experience in Sarah Pinborough's Novel Behind Her Eyes. Zahra writes about a sleep disorder called Parasomnia that leads to an out-of-body experience.

The writer also finds a few articles on the website as other previous studies. The eighth study comes from Chaney (2021) in the article entitled *Okay, Let's talk about Behind Her Eyes Double Twist Ending*. Chaney writes about a psychologist who explores astral projection to illustrate how we put our own emotions and perceptions onto anyone else. The ninth study comes from Anderson (2021) in the article entitled *Truth about Adele and Rob Teased through colours in Behind Her Eyes*. Anderson writes about Adele teaching Rob how to do astral projection with their consciousness, travel out of his body, and go elsewhere in the physical world. The last study comes from Pocklington (2021) in the article entitled *Netflix's Behind Her Eyes Decoded - from lucid dreaming to astral projection - and how you could learn to do it too*. Pocklington writes about the main character's manipulation of dreams or calls it the astral projection as the first step toward accomplishing goals.

In comparison to the prior studies stated above, this thesis is unique. In this thesis, the writer examines the psychoanalysis (id, ego, superego) that exists in the main character, Rob Hoyle, as well as the mental disease known as an obsessive-compulsive personality disorder that Rob Hoyle has suffered, and astral projection abuse.

1.5 Scope of the Study

This scope of this research is quite limited. The writer focuses on the analysis of the main male character in *Behind Her Eyes* (2021) to find out the psychoanalysis such as id, ego, and superego, the symptoms of obsessive-compulsive personality disorder, and the last is the abuse of astral projection method by Rob Hoyle as main character based on psychoanalytic theory with the help of DSM - V (obsessive-compulsive personality disorder) and astral projection theory.

1.6 Writing Organization

The description of writing organization as follows:

CHAPTER I INTRODUCTION

In this chapter, the writer describes the background of the study, research problem, the objective of the study, previous studies, the scope of the study, and writing organization.

CHAPTER II THEORY AND METHOD

In this chapter, the writer explains the theory used to analyze the data of this research.

CHAPTER III ANALYSIS AND DISCUSSION

In this chapter, the writer analyzes the extrinsic aspect of psychoanalysis (id, ego, and superego), obsessive-compulsive personality disorder, and astral projection.

CHAPTER IV CONCLUSION

In this chapter, the writer writes about the conclusion of this research.

CHAPTER II

THEORY AND METHOD

2.1 Theoretical Framework

In this chapter, the writer explains the theories that are used and relevant to the study. In intrinsic theory, the writer chooses several theories namely character, conflict, setting, and cinematography element. Then in extrinsic theory, the writer discusses the theories of personality structure in psychoanalysis, mental disorder, personality disorder, obsessive-compulsive personality disorder, and astral projection.

2.1.1 Intrinsic Element

Novels have main intrinsic element. The elements are character, plot, setting, time, narrative perspective, and style. However, the intrinsic factors that may exist in a novel do not only function as definition in the novel genre, but some of these intrinsic elements can be important for investigation in the film (Klarer, 2004: 14).

2.1.1.1 Narrative Element

The simple understanding of these narrative elements is a series of events that have a beginning, middle, and end. Narrative elements can be characterized by seeing the foreground of a series of events or actions that are both of them related to time (Bennett and Royle, 2004: 53).

2.1.1.1.1 Character

In general, a character in literature or fiction is a representation of an extended human verbal act. There are two types of characters, Round and Flat characters. A round character usually is a main character or calls it the protagonist in the story. The protagonist is the center or core of action that has to have the aim to fight the antagonist (Robert and Jacobs, 1986: 134-135). The protagonist is very easy to identify because the protagonist is the main character who builds the plot. It is different from the antagonist, which is very difficult to recognize if the antagonist is not a human, but an enemy from the social or natural environment where the protagonist is obliged to compete with the antagonist (Pickering and Hoeper, 1981: 24-25).

2.1.1.1.2 Conflict

Every fiction which is produced needs conflicts to make the story alive. Conflict is the one element in the story that cannot be abandoned and the most notable part of the conventional plot (Klarer, 2004: 15). According to Stanton, conflict is divided into two, internal and external conflict. It can be concluded that this internal conflict occurs because of two desires that exist in the character's mind. Meanwhile, external conflict occurs between two different individuals or individual with the surrounding environment (1965: 16). Conflict is not very difficult to investigate and interesting to discuss when the conflict occurs between two different individuals. The primary elements in the conflicts found in the plot is that two

energies are in contradiction, involving any hesitation about the result (Robert and Jacobs, 1986: 103).

2.1.1.1.3 Setting

The setting is a primary element of the narrative. The settings are divided into three parts, namely the setting of the place, the setting of time, and the social setting that may occur in the narrative work (Abrams, 1999: 284). The setting of the place is where the story is located, for example, a house, street, and area. Then, the setting of time, there is a time that shows when the story occurred, such as hours, years, or even centuries (Kennedy, 1991: 80). Meanwhile, the social setting can be defined as a social and political order that maintains the conditions of the setting. For example, the story shows a luxury house which indicates the owner has high and expensive resources (Roberts and Jacobs, 1986: 206). According to Pickering and Hooper, setting in fictional work has the function that it (1) can be the background of an action; (2) as an antagonist; (3) as a means of creating a very natural atmosphere; (4) as a medium of the character utterance; (5) as a medium to strengthen the theme (1981: 38).

2.1.1.2 Cinematography

The Cinematography term is "writing with the act", and that word is from Greek roots meaning. Cinematography is more than film making (shooting) but is more about the act of photography. Inside cinematography, there are a process of taking ideas, an activity, color, and all other nonverbal forms (Brown, 2012: 2).

2.1.1.2.1 Color

The movie needs color to tell the story and tell the emotion. The choice of color tone in the film can also affect feeling. So, according to Brown, color is one of the main tools, and it has the power as a means of communication. It can give the soothing or unpleasant effect like listening to music or watching a dance. Color is also a powerful tool in creating visual subtext (2012: 228).

2.1.2 Extrinsic Aspect

Fiction has two aspect, namely intrinsic and extrinsic aspect. In a narration, the extrinsic aspects contain a social context. Usually, the extrinsic elements can be identified through the author's biography and psychology, the economic, social, and political circumstances (Werren and Wellek, 1956: 73).

2.1.2.1 Psychoanalysis

In literature, psychoanalysis is widely discussed to analyze an emotional event of a character. Psychoanalysis can be defined as a collection of psychological theories and therapeutic methods created by Sigmund Freud. Psychoanalysis is divided into three levels of consciousness; subconscious, conscious, and unconscious. In addition, psychoanalysis can also be used to analyze the emotional disturbances found in a sufferer (Bateman and Holmes, 2001: 16).

2.1.2.1.1 The Id

The id is a shelter for instinctive and aggressive sexual impulses. In the id, several things threaten and want to be released, such as emotions of selfishness,

sexual, deviant, and brutal attitudes. This id has a pillar known as the “pleasure principle”, and the id demands gratification and does not heed anything. The id dissolves in the subconscious, and this is like the illustrations of an underwater iceberg given by Freud. In essence, the purpose of the id is to demand immediate gratification (Heller, 2005: 90). According to Hall, the id has the function of releasing energy in humans through an internal or external impulse, and it fulfills the initial or primeval principle (1954: 22). When someone does something impulsively, indirectly that person will show the id part. For example, if there is an urge to throw stones at someone, to make a person stumble, or to rape someone, then the doer is under the domination of the id (Hall, 1954: 27).

2.1.2.1.2 The Ego

The ego is a picture of the rational aspect of personality. The ego also focuses on reality. In this topographical mind, the ego is in the middle, some part is conscious, and some part is unconscious (Bateman and Holmes, 2001: 35). According to Hall, when the ego performs its function very wisely, harmony and a process will emerge. If the ego gives too much power to the id, superego, or the outside world there will be disharmony (1954: 28). In the topography of the mind, the conscious part of the ego helps us to make decisions intelligently and carefully (Heller, 2005: 91). According to Hall, formal education has the primary goal of teaching someone how to think more effectively because this is the ability to reach a truth (1954: 30-31).

2.1.2.1.3 The Superego

The last of the structural levels in psychoanalysis is the superego. According to Bateman and Holmes, the “superego” can be described as conscience and ideals; it is passed down through the internalization of parents, as well as cultural influences from childhood onwards (2001: 35). The superego has a significant function to uphold its moral rules which result in rewards and punishments. For example, after having worked hard for a long time, the vacation is a kind of reward approved by the superego (Hall, 1954: 32-33).

2.1.2.2 Mental Disorder

Mental disorders are symptoms that are characterized by clinical cognition, then there is emotional regulation or other signs such as psychological dysfunction, and biological or developmental processes. Mental disorder underlies mental function as reflected in the individual's behavior. This mental disorder is usually associated with an inability to do things in the usual way in social, work, or other important activities (American Psychiatric Association, 2013: 20).

2.1.2.2.1 Personality Disorder

A personality disorder is a mental and behavioral pattern experienced by an individual which deviates from the individual's cultural expectations. Personality disorder is inherent and inflexible which has a reaction in adolescence or early adulthood. Personality disorder involves a pretty stable time, and causes distress or disturbance (American Psychiatric Association, 2013: 645).

2.1.2.2.1.1 Obsessive-Compulsive Personality Disorder

An obsessive-compulsive personality disorder is preoccupied with the inherent pattern of rules, perfectionism, mentality control, and the management of personal relationships with others, sacrificing flexibility, openness, and emphasizing efficiency. This disorder can occur in early adulthood and is related to various contexts (American Psychiatric Association, 2013: 679).

2.1.2.2.1.1.1 The Symptom

According to the American Psychiatric Association, this psychological problem consists of eight diagnostic criteria. However, only three of the eight criteria will be discussed, namely criterion number 3, criterion number 5, and criterion number 8. The symptoms focus is on work devotion, in ability to forget unessential things, as well as being stubborn as follows:

“3. Is excessively devoted to work and productivity to the exclusion of leisure activities and friendships (not accounted for by obvious economic necessity)... 5. Is unable to discard worn-out or worthless objects even when they have no sentimental value... 8. Shows rigidity and stubbornness” (American Psychiatric Association, 2013: 678 – 679).

2.1.2.3 Astral Projection

Astral projection is a normal bodily function (which is going there and knowing that the person leaving the physical body and it can be done consciously (Belsebuub, 2013: 10). This astral projection indicates a detached consciousness from one's physical body. For example, a person's soul which is floating can see his body lying. Astral projection usually occurs in several methods, starting from dreaming to

consciously leaving the body which occurs during sleep. This activity uses a combination of astral projection techniques and lucid dreaming which does not relate to death. In this situation, someone can learn and gain an understanding of death that is not found elsewhere. This activity does not deal with death or near death in any way but uses the natural connection, someone already has the astral plane through the normal process of sleep. Astral projection must be practiced without the stress that will interfere, harm, or change the existing natural state of the physical body because this can be fatal if someone is doing a near-death experience. Astral projection will be quite effective if the performer has adequate rest and in a psychologically healthy condition (Belsebuub, 2013: 19-20).

2.2 Research Method

To support the analysis, several research methods are applied as explained below.

2.2.1 Data Source

The data source in this research is taken from a novel adaptation into film especially limited series entitled *Behind Her Eyes* by Steve Lightfoot. The limited series is directed by Erik Richter Strand and released by Netflix on February 17, 2021.

2.2.2 Data Collection

In this research, the writer chooses the qualitative method and library research to collect the data. The qualitative method is a method of understanding the message

presented by individuals or groups regarding humanitarian issues or social problems (Creswell, 2014: 64). The writer also uses library research to facilitate the study, in which this research uses several books, information on the internet, or articles which are printed or not as a source of writer information. According to George, library research is one of the data collection techniques in research by studying books, articles, non-print media, and essays that relate to the problem point in the study (2008: 3). Library research obtains factual information and research questions will be answered by expert and personal opinions (George, 2008: 6). So, the writer of this research collects data by taking pictures and text as evidence, then analyze them according to existing issues.

2.2.3 Data Analysis

The research entitled “Obsessive-Compulsive Personality Disorder of Rob Hoyle as The Male Character in *Behind Her Eyes* (2021) Novel Adaptation to Limited Series” by Steve Lightfoot will be analyzed using contextual methods. According to Behrendt, contextual analysis is one way of analyzing a text with any intermediary such as text, audio, video, images, etc. This contextual method involves the context of its historical and cultural background (2008). This contextual method is used to analyze intrinsic and extrinsic aspects with the help of the psychoanalytic theory; id, ego, superego by Sigmund Freud and the theory of obsessive-compulsive personality disorder from DSM - V by the American Psychiatric Association (APA).

CHAPTER III

ANALYSIS AND DISCUSSION

3.1 Intrinsic Element

In this study, the writer analyzes and discusses several intrinsic aspects, namely characters, conflicts, and settings in a limited series entitled *Behind Her Eyes* (2021). In the intrinsic element, the cinematography will also appear in this intrinsic aspect.

3.1.1 Narrative Element

In this section, the writer will explain the characters, conflicts, and settings to support the analysis and discussion of the “Obsessive-Compulsive Personality Disorder of Rob Hoyle as the Male Character in *Behind Her Eyes* (2021) Novel Adaptation to Limited Series”.

3.1.1.1 Character

The writer will discuss only two characters in this limited series. The characters are Rob Hoyle as the male main character and Adele Ferguson as the supporting one.

3.1.1.1.1 Rob Hoyle

Robert Dominique Hoyle, often called Rob Hoyle (Rob), is the main male character in the limited series *Behind Her Eyes* (2021). Rob is described as an adult man who has white skin, a beefy body, and a proportional height of about six feet. Rob's body is ideal for a grown man. He never grows his black hair and looks bald. Usually, Rob wears a collared style of clothing with jeans wherever he is. Sometimes,

he wears his leather jacket. Rob is wearing a modern style around the 20s. Rob also has an ambitious soul for something. This is going to be bad, because Rob uses any means to get what he wants. The following picture is a proof of Rob's appearance who likes to wear the collared style of the 20th century.



Picture 1: Rob Appearance (*Behind Her Eyes* part 6, 10:13).

In the family tree, Rob is the second child of two siblings. However, their parents are not seen from the beginning of the story. Rob has only one elder sister, and her name is Ailsa Hoyle. They are very close in age, Ailsa is about 28 years old, and Rob is about 25-26 years old. They are only two to three years apart. They come from a mediocre family, and only Ailsa works as a flower shop owner. However, the relationship between the two of them is not very good. Ailsa is so busy with her business and her boyfriend that she does not care about Rob. So, Rob is like living alone. Then Rob messes up by using drugs because the environment where he lives really supports him to do that. Rob often experiences night terrors which are very disturbing and make him nervous. Ailsa once said that she did not care about her only brother and thought Rob was dead.

Ailsa: “No. Chances are he was dead in an alleyway somewhere soon enough. – don’t be. Rob was a nasty wee shite. He really was. He’s not worth your bother”

(*Behind Her Eyes* part 5, 36:18 – 36:30).

Rob's addiction to drug is very serious. In the rehabilitation place, Rob meets Adele, Rob's friend during his treatment in the psychiatric ward. The relationship will be discussed in the following section. A long time after their recovery period in the psychiatric ward has ended, Rob takes time to visit Adele's house. Since then, Rob often visits Adele's home and meets David, Adele's lover. Rob looks happy when he is at Adele's house. The picture below is a scene where Rob comes to see Adele's home, and the visuals shown in green to cold tones give Rob a calm and happy expression.



Picture 2: Rob Visits Adele's House (*Behind Her Eyes* part 4, 28:57).

3.1.1.1.2 Adele Ferguson

Adele's real name is Adele Campbell. She gets the "Ferguson" surname after she marries a psychiatrist, named David Ferguson. Adele illustrates as a woman who has long, wavy hair, beautiful eyes, and fair skin. She is no taller than Rob, only about five feet tall and about twenty-five years old. Adele loves wearing medium dresses with loose hair. Adele wears clothes from the 90s era.



Picture 3: Adele's Appearance (*Behind Her Eyes* part 5, 32:05).

Whatever Adele wears always looks feminine. She always wears a gift watch from David, her boyfriend. She wears it when she is in the psychiatric ward. The following words indicate the watch that Adele always wears.

Adele: “It is David’s. I gave him it as a present, but he can’t wear it right now. So he wants me to wear it until I get out of here”
(Behind Her Eyes part 2, 13:03 – 13:08).

Adele is a friendly and very kind woman, so she gets along with everyone, including when she meets Rob at the psychiatric ward. In addition, Adele is an affectionate person. She always takes her time to receive calls from her boyfriend. Adele is very open to anyone, including Rob, whom Adele has meet recently. She tells Rob that she is very well off.

Adele does come from a wealthy family. She tells Rob that she is a descendant of nobility, but it does not continue because Adele is an only child. In every room, there are many paintings of Adele’s house and that of Adele’s great-grandmother. Her parents have died because of a fire that destroyed part of her house. Adele can keep afloat because of the help of David, who forces himself to help Adele. This incident leads Adele to undergo treatment in a psychiatric ward.

Adele firmly believes that no one will betray her and Adele manages to make Rob believes in her. As a result, Adele gives Rob an overview of activities that she thinks are fun. David does not know about this activity called astral projection. It will be discussed further by the writer in the astral projection sub-chapter.

3.1.1.2 Conflict

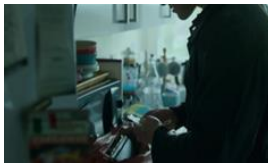
Each characters has internal and external conflicts. The writer will discuss further the internal and external conflicts that can be found in Rob Hoyle.

3.1.1.2.1 Internal Conflict

In Rob Hoyle, there is an internal conflict that makes him do several things. The writer will discuss it as follows.

3.1.1.2.1.1 Rob's Disappointments

As long as Rob Hoyle lives, he must have experienced conflicts between himself and others. This conflict starts with Rob's sister, Ailsa. Ailsa lives with her boyfriend in a small rundown apartment because both Ailsa and Rob do not get any inheritance from their parents. Rob feels a tremendous disappointment towards Ailsa for not paying attention to him. One day, he leaves Ailsa. Rob takes some money from Ailsa's wallet without her knowing it because he is already upset and disappointed with Ailsa. He is going away from Ailsa as the way to channel his anger. The following is an image that represents the statement above.



Picture 4: Rob Took Money from Ailsa's Wallet (*Behind Her Eyes* part 5, 17:48).

Rob has no money at all, but he wants to meet Adele and visit her house with his sister's money he takes. Therefore, Rob does not waste the opportunity to visit

Adele's house to experience what it is like to be rich. Rob wants to know the answer to what he just said.

Rob: “What is it like to be so fucking rich and so fucking pretty?”
(*Behind Her Eyes* part 4, 30:55 – 31:00).

The quotation tells what Rob is questioning, but Adele answers the truth that being rich and beautiful is very lonely. At that moment, Rob wants to give half of his body to fill Adele's loneliness because Rob comes from a family that does not think he exists and he has never felt genuine affection like what he feels toward Adele. At the same time, in Adele's house, Adele offers to Rob to do an astral projection activity for the first time and they do it.

Furthermore, Rob likes living in a psychiatric ward because he and Adele are similar to each other. There are no differences in the form of uniform clothes and food. Rob and Adele are close to each other. While sitting in the psychiatric ward yard with Adele, Rob expresses his disappointment.

Rob: “Out there, you know, I'm just a junkie with a shitty family. No friends, no talent. Nothing about that life I want back”
(*Behind Her Eyes* part 4, 04:44 – 04:58).

When he said to Adele at that time, Rob put on a face that he was devastated by the situation. Out there, Rob has no friends and talent. He lives in a family that does not value Rob's existence. One thing Rob wants is an escape from that situation.

3.1.1.2.1.2 Rob and David's Affection

Another internal conflict experienced by Rob is his longing for affection. He rarely feels love and happiness as long as he lives until he meets Adele at the psychiatrist's ward as can be seen from his words.

Rob: "Sometimes I think in here with you is the happiest I've ever been"
(*Behind Her Eyes* part 4, 05:06 – 05:10).

Rob and David, Adele's lover, get to know each other well. Rob, Adele, and David spend one day together cooking a grilled chicken in Adele's kitchen. Rob slips a joke while they are cooking. He cooks grilled chicken with his homemade sauce. The cool tones of the cooking scene show the fun experienced by the character because of Rob's jokes. The cuisine is tantalizing and it is time for them to eat together in Adele's dining room. The dining room scene shows a warm color tone. The color tone in this scene is orange, which describes warmth, feelings of pleasure, energy, and enthusiasm for something. This color tone indicates Rob's secret feeling. When Rob is talking with David, something triggers inner conflicts to flare up inside Rob. He also wants David's attention. When David tells Rob that he loves Adele very much and does not want to lose her, Rob also wants to get such affection from both David and Adele. The following pictures are a snippets of the scene that represent the statement.



Picture 5: Rob and David Put the Chicken into the Oven (*Behind Her Eyes* part 6, 09:02).



Picture 6: Rob and David in the Dining Room (*Behind Her Eyes* part 6, 12:02).

Rob tells David that in his heart, he is jealous of David and Adele. First, they both love each other. Second, they both get what they want. Based on Adele and David's backgrounds, they both come from very affluent families. Their wealth is everywhere, including the house that belongs to Adele's family, which is half burning down. Rob tells David that he is jealous.

Rob: "I'm jealous. ... Aye, and Adele. Both of you. What you've got together. ... All you want"

(*Behind Her Eyes* part 6, 12:42 – 13:02).

Rob thinks it will be interesting if he gets everything he wants, including a lover. It is one of the reasons Rob is so jealous of David and Adele and the big love that David gives to Adele. Rob's jealousy makes him set up an ambitious strategy to get what he wants.

3.1.1.2.1.3 Rob's Jealousy

Rob's jealousy is another internal conflict experienced by Rob. Rob's jealousy to Adele's life drives his ambition to possess Adele's body. Rob wants to get the love and wealth that he never receives through Adele. For that purpose, Rob builds trust with Adele. At first, Rob's main intention is purely to be friends with wealthy woman,

but this changes when Adele talks about astral projection. They want to do it because they trust each other but Rob still has his doubts.

When they are doing the astral projection and the body swap, Adele's soul is in Rob's body, Rob swiftly kills Adele's soul along with Rob's body using injections containing high doses of illegal drugs. Rob's soul remains in Adele's body. Rob still in Adele's body confesses to David with a panicked face that Rob's body goes into the old well along with the watch that David gives. Then they are going to the old well and David is feeling confused because of this incident. The following is a representative image.



Picture 7: Rob's Confession in Adele's Body (*Behind Her Eyes* part 6, 18:46).

Sometime later, Rob in Adele's body marries David and started a new life in London. David hopes that moving to the city can heal his trauma from Rob's tragedy because they live in luxury and love each other. Nobody knows, even David, that it is Rob's soul in Adele's body. Everybody thinks that it is Adele in Adele's body.

3.1.1.2.2 External Conflict

Before Rob lives in Adele's body, Rob in his own body experiences external conflict, namely social conflict. The writer will discuss these social conflicts below.

3.1.1.2.2.1 Social Conflict

Rob's social conflict is triggered by economic issues. Rob lives in a mediocre family in a shabby little apartment. The unfavorable economy makes him have to steal Ailsa's money as initial capital to visit Adele's house. Rob plans not to return to Ailsa, his elder sister. Rob feels certain about his decision to stay with Adele because Adele is a wealthy person, so she does not feel worried about money.

Another social conflict is between Rob with the community around him. He lives in a community where there are lots of thugs selling illegal drugs. Such kind of environment makes him a drug addict. The following picture is a proof of Rob's drug transactions before leaving Ailsa and heading to Adele's house.



Picture 8: Rob and Other People Doing the Transaction (*Behind Her Eyes* part 5, 18:38).

Thus, Rob experiences two external conflicts triggered by his poor economy and bad society. In this condition, Rob is very comfortable being an addict. However, when he is in psychiatric ward to treat his addiction, he feels comfortable because he meets Adele.

3.1.1.3 Setting

The setting that will be discussed by the writer include place setting, time setting, and social setting.

3.1.1.3.1 Setting of Place

There are only five settings of place that will be analyzed by the writer in *Behind Her Eyes*.

3.1.1.3.1.1 Campbell House

The setting of this first place is where Adele's parents live. Adele has a house like a castle in Scotland called Campbell House. The construction shows that the house was built around the 20th century. The Campbell house has a Gothic Revival theme. The design of the house and cottage theme relate to Adele's family background. Her extended family, especially her great-grandmother, was of noble descendants. It is reflected in the paintings in the Campbell family home. The picture below shows the Campbell house and the interior.



Picture 9: Adele's Parent House (*Behind Her Eyes* part 5, 33:20).



Picture 10: A Room Full of Paintings (*Behind Her Eyes* part 4, 28:52).

3.1.1.3.1.2 David Ferguson's Private Residence

The building, which is quite majestic and modern in white, is the residence of the romantic 'look' couple, David Ferguson and Adele with Rob's soul. The residence carries the theme of a modern and modest house but is still luxurious with the appearance of the private car. The house is in a location north of the city of London. Cool color tones like white and a little silver indicate that David Ferguson's house is

simple but elegant and glamorous. The picture below is representative of the statement.



Picture 11: Adele with Rob's Soul and David's House (*Behind Her Eyes* part 5, 39:44).

3.1.1.3.1.3 Louise's Apartment

Louise is David's lover after he has married with Adele's body who contains Rob's soul. Louise has apartment in London, the city with a fast-growing environment. Louise's apartment carries the theme of medieval developments. The design of the apartment is different from the others. The apartment has a unique semi-circular balcony as a place for relaxing, as shown in the picture below.



Picture 12: Louise's Apartment (*Behind Her Eyes* part 5, 05:39).

3.1.1.3.1.4 Bar

The lively bar and cafe called Clerkenwell on Old Street is the place where David meets Louise for the first time. Louise and David's meeting is the beginning of David's affair. Louise does not know that David is her new co-worker. Warm tones of orange signify enthusiasm and comfort between Louise and David. It is represented in the picture below.



Picture 13: Louise Met David at A Bar (*Behind Her Eyes* part 1, 06:09).

3.1.1.3.1.5 Ironmonger Row Baths

Ironmonger Row Baths is the name of the oldest bath not far from Louise's house. Without David awareness, Rob in Adele's body is already close to Louise after there is accidental meeting in the street. As can be seen in the picture below, it shows Rob in Adele's body invite Louise to spend time at the gym together and visit the oldest baths around.



Picture 14: Rob in Adele's Body and Louise at Ironmonger Row Baths (*Behind Her Eyes* part 2, 27:51).

3.1.1.3.2 Setting of Time

Although the story takes the background of the 21st century, the atmosphere and clothes of Rob Hoyle and Adele carry the style of the 20th century. The 20th century atmosphere can also can be seen in Adele's house which is an ancient house. When David marries Adele, the Ferguson's house is the 21st century house with modern and sophisticated technology. The picture below proves that the setting of time in this film is in the 21st century.



Picture 15: Campbell's House (*Behind Her Eyes* part 3, 06:10).



Picture 16: Ferguson's House Interior (*Behind Her Eyes* part 3, 13:32).

Other specific settings of time occur in the morning, afternoon, and evening. In the morning, there is a scene of David going to the office. People go to work usually in the morning. The night is the time when people will relax, the lights turn on, and they sleep to prepare for the next day. The picture below shows the settings of time.



Picture 17: David Goes to Work (*Behind Her Eyes* part 1, 14:48).



Picture 18: David Back Home After Working All Day (*Behind Her Eyes* part 3, 13:50).

3.1.1.3.3 Social Setting

There are two social settings, the first social setting is Rob's social condition. When Rob is in Rob's body, he is a poor person. His sister, Ailsa, is just a flower shop owner with a mediocre income. The second social setting is when Rob's soul is in Adele's body. When Rob in Adele's body marries David, the life of Rob in Adele's body has changed almost 180 degrees. Rob in Adele's body lives in luxury with modern house and sophisticated car. The interior of their house is simple but

elegant items. The pictures below shows the condition of Rob in Rob's body and Rob in Adele's body.



Picture 19: Rob's Family Condition (*Behind Her Eyes* part 5, 17:39).



Picture 20: Ferguson's House Interior (*Behind Her Eyes* part 3, 07:01).

3.2 Extrinsic Aspect

The writer will analyze the extrinsic aspect in the adaptation of the novel entitled *Behind Her Eyes* (2021) limited series. The extrinsic analysis focus on the psychoanalysis including id, ego, and superego, obsessive-compulsive personality disorder, and astral projection.

3.2.1 Psychoanalysis

The writer will discuss psychoanalysis namely id, ego, and superego which Rob experiences in his own body and Rob in Adele's body.

3.2.1.1 The Id Experienced by Rob Hoyle

Adele which contains Rob's soul is experiencing the id. The eating activity carries out by Rob in Adele's body is a representation of the id. There is an urge for Rob in Adele's body to eat the food on the plate. The same thing happens when David asks his wife (which is actually Rob in Adele's body) to take the pills he prescribes at certain time. When Rob in Adele's body takes them, Rob in Adele's body does not

experience excessive anxiety. The two pictures below show eating activities. Picture 21 represents the activity done by Rob in Adele's body is an impulse, and this impulse is what makes a person eat without consideration. Picture 22 represents Rob in Adele's body taking the pills to reduce the anxiety.

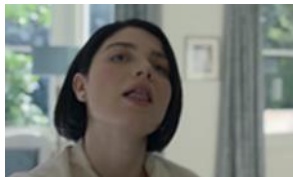


Picture 21: Rob in Adele's Body Having Dinner (*Behind Her Eyes* part 5, 27:01).



Picture 22: Rob in Adele's Body Eats a Pill (*Behind Her Eyes* part 1, 13:55).

In addition to eating and drinking, the other activities that are driven by the id are singing and swaying. In one occasion, Rob in Adele's body is singing smoothly because Rob in Adele's body knows the song by heart. When singing the song, Rob in Adele's body is very happy and feels relaxed, as represented by the picture below. The body sways to the rhythm of the song. It proves that singing and swaying is driven by instincts and impulses. The pictures below are representative of the id of Rob's in Adele's body.



Picture 23: Rob in Adele's Body Sings a Song (*Behind Her Eyes* part 2, 06:03).



Picture 24: Rob in Adele's Body is Swaying (*Behind Her Eyes* part 2, 06:14).

Rob in Adele's body and David's sexual activity is the dominant id at the time. They do it without coercion and get carried away. The urge drives them to have sexual activity, which is part of the id and is innate from birth. This statement is indicated in the picture below.



Picture 25: Rob in Adele's Body and David Do the Sexual Activities (*Behind Her Eyes* part 1, 25:52).

3.2.1.2 The Ego Experienced by Rob Hoyle

This ego can also be seen in Rob in Adele's body. One night, Rob in Adele's body is confused because David does not come home. Meanwhile, David is with Louise, his mistress, who is reported to be sick. After some time, Rob in Adele's body falls asleep, and when David comes, he does not sleep in the same bed with his wife. The next morning, Rob's soul in Adele's body realizes it and is wondering about David's action. Before leaving for the office, David does not say goodbye to his wife. Adele's body with Rob's soul, who is still lying down is ignored by David. Rob in Adele's body knows that David is indifferent to his wife. The ego of Rob in Adele's body chooses to be quiet and fake a sleep rather than greeting David and asking where David went all night because the ego wants to prevent David's mood becoming worse in the morning, as seen in the picture below.



Picture 26: Rob in Adele's Body is Sleeping in Her Bed (*Behind Her Eyes* part 3, 02:42).

The representation of the ego of Rob in Adele's body can also be seen in the following occasion. Next day, Rob in Adele's body dumps the pills David gives his wife into the sink. Before leaving for work, David orders his wife to take the pills based on the new prescription. Rob in Adele's body pretends to swallow the pills but actually he hides them up. After David goes to the office, Rob in Adele's body throws the pills into the sink. Rob in Adele's body does this action because he does not feel that he needs the pills anymore. However, David feels there is something strange with his wife.

David: "I didn't like the way you sounded on the phone the other day"

Rob in Adele's body: "How did I sound?"

David: "Like that"

Rob in Adele's body: "I don't need new pills"

(*Behind Her Eyes* part 3, 22:55 – 23:03).

The picture and quotation from the conversation show that Rob in Adele's body does not feel anything wrong with the body, so Rob refuses the medicine from David.



Picture 27: Rob in Adele's Body Throws the Pills in the Sink (*Behind Her Eyes* part 3, 24:02).

Rob's ego can also be seen in the previous moment when Rob is in his own body and Adele is still in her own body too. At that time, Adele invites Rob to try the astral projection activity. At first, Rob's ego is hesitant because he is still unfamiliar with body swap activity, but at the same time Rob's ego also wants to try it with Adele. To do the astral projection activity, they both lie down and fall asleep. Then blue light comes out from Rob's body and purple light comes out from Adele's body, as can be seen in the picture below.



Picture 28: Rob and Adele is Lying (*Behind Her Eyes* part 5, 29:04).

In this astral projection activity, the lights return to their respective bodies and both, Rob and Adele looks happy because the astral projection works as expected. Although at first Rob feels hesitated whether this activity is good for him or not, now Rob's ego feels sure about this activity.

3.2.1.3 The Superego Experienced by Rob Hoyle

The superego experienced by Rob in Adele's body as David Ferguson's wife will not do anything that will violate the norms in society. This can be seen in connection to the woman named Marianne, the café owner that becomes David's lover. Rob in Adele's body meets the woman only to scare the woman who is close to David, and also gives a little threat if the woman continues to approach David. The superego is dominating Rob in Adele's body because he does not do anything that

can violate the prevailing norms in society. Although at first Rob in Adele's body wants to kill Marianne, Rob realizes it that killing someone is a heinous act and will be entangled with the applicable law. Another reason why Rob in Adele's body does not kill Marianne is because of Marianne's cute cat. Rob's soul in Adele's body thinks that if he kills the woman, he will become a fugitive and no one will feed the cat. Moreover, it will surely embarrass David and Rob in Adele's body will lose David. Because of the superego, Rob in Adele's body returns the knife she takes from the kitchen of the Marianne's house. Instead of killing Marianne, Rob in Adele's body gives threats as seen in the quotation below.

Marianne: "Have you been in my house, you bitch? Did you"—

Rob in Adele's body: "Must be scary... living alone. Because if someone wants in, they can always find a way. And if anything happens to you, who's gonna feed the cat?"

(*Behind Her Eyes* part 6, 06:02 – 06:22).

3.2.2 Obsessive-Compulsive Personality Disorder

Obsessive-Compulsive Personality Disorder is a pattern that a person has regarding his preoccupation with order, perfectionism in things, and mental control. Someone who has a mental disorder will sacrifice openness in himself, flexibility in work, and also efficiency in anything, especially time.

3.2.2.1 The Symptoms of Obsessive-Compulsive Personality Disorder

Experienced by Rob Hoyle

The writer will identify only three of the eight criteria that are experienced by Rob in Adele's body.

3.2.2.1.1 The Symptom of Rob's Work Devotion

The writer identifies criterion number 3 from DSM - V as the first criterion of Rob Hoyle. This criterion explains that sufferers prioritize excessive productivity and put aside activities connecting to friendship. Rob in Adele's body has this criterion. Rob in Adele's body always prioritizes productivity every day, especially with things that concern him. Often Rob in Adele's body neatly organizes things, like going to the gym every week without missing it. The picture below shows the activity. Besides that, Rob in Adele's body subscribes to become a gym member to support the productivity.



Picture 29: Rob in Adele's Body Holds the Gym Equipment (*Behind Her Eyes* part 4, 24:54).

3.2.2.1.2 The Symptom of Rob's Saving the Unessential Thing

In criterion number 5, the sufferers love to keep things that are not important to them. They will be angry if the item has gone. The writer identifies criterion number 5 as the second criterion shown in Rob in Adele's bodies activity. It is shown in the picture below. Rob in Adele's body keeps the Rob genuine belongings, even though she does not need them. The item is a photo of Adele in her own body with her family. Although, the current Rob in Adele's body does not need it, Rob in Adele's body still keeps it in a chest in the corner of the house. This condition is very

similar to criterion number 5, where the patient keeps things that are not necessarily useful to him track her.



Picture 30: Rob in Adele's Body Saves the Useless Stuff (*Behind Her Eyes* part 2, 11:54).

3.2.2.1.3 The Symptom of Rob's Stubbornness

In criterion number 8, the sufferers are very stubborn and full of rigidity. Usually, the sufferers ignore the opinion of others, so the sufferers faces their own decision. They are also careful in planning something in the future. The sufferers have so much trouble accepting other perspectives. Rob in Adele's body shows criterion number 8 as the third criterion. Rob in Adele's body is a very rigid person and also very careful in planning things. In the picture below, Rob in Adele's body asks Louise all kinds of questions. The face of Adele with Rob's soul in her body, looks very innocent while planning something as Louise talks a lot about herself.



Picture 31: Rob in Adele's Body Talks with Louise (*Behind Her Eyes* part 2, 01:16).

3.2.3 The Astral Projection Method Finally Abuse by Rob Hoyle

At first, the idea of the astral projection comes from Adele who is still in her own body. Adele tells Rob about the activity and both of them agree to try it.

Although at first Rob looks doubtful about the idea of Adele that is lying beside him. Rob follows Adele's wishes to do the activity because Adele has convinced Rob. Adele thinks that performing the astral projection is quite a fun thing for her because it allows her soul to go around wherever she wants, as long as the person can imagine it. The quotation below shows that Adele in her own body really likes this activity because she can go wherever she wants.

Adele: "Not far at the beginning, but the more you do it, the further you can get. It is like building a muscle. I think you can go anywhere you've been before, as long as you can visualize it"

(Behind Her Eyes part 5, 32:40 – 32:53).

Rob's soul is interested in Adele's astral projection activity because he plans to possess Adele's body. Rob slightly is obsessed with David's attention and money. Rob tricks Adele into doing another astral projection while swapping bodies does Rob soul enters Adele's body while Adele soul enters Rob's body. However, when Rob in Adele's body wakes up first, he directly executes his evil plan to possess Adele's body. Rob in Adele's body injects a high dose of drugs into Rob's body with Adele's soul in it. As a results Rob's body with Adele's soul in it gets overdosed and dies. Because Rob's body dies, then Adele's soul dies too because Adele's soul has no body to reside. Using the evil tricks, Rob's soul possesses Adele's body and nobody knows about the body – body soul swapping that happens before. So, the evil plan is successful, other people including David, Adele's lover realizes that Adele's soul has died and Adele's has Rob's soul. For other people, they just know that Rob dies because of being overdosed. Although, actually it is only Rob bodies that dies.

After this happening, what people know as Adele is actually only Adele's body with Rob's soul. Rob has been successful in abusing the astral projection for his own benefit as can be seen in the following picture.



Picture 32: Their Souls have Swapped (*Behind Her Eyes* part 6, 45:13).

CHAPTER IV

CONCLUSION

Limited series entitled *Behind Her Eyes* (2021) tells about a man who has an addiction to drugs named Rob Hoyle. He gets a best friend from a psychiatric ward named Adele. Rob also gets closer to Adele's lover, David Ferguson. The situation makes Rob want to get all that David and Adele have, such as attention and money. The writer analyzes this study based on psychoanalysis theory with the help of DSM - V and astral projection theory. Rob Hoyle is experiencing the id, the ego, and the superego (when Rob in his own body and Rob in Adele's body). Eating, taking pills, singing, dancing when the music is playing, and doing sexual activities are part of Rob's id, which is the impulse that drives Rob's id to do that activity. Meanwhile, Rob's ego is when Rob doing a fake sleep to make David's day better, Rob throwing the pills when nothing is wrong with his body, and Rob is also hesitant to carry out the astral projection. The superego of Rob Hoyle can be seen when he wants to kill a woman who is close to David at that time, but he only gives a threat just because he does not want to violate the prevailing norms in society. A mental disorder called obsessive-compulsive personality disorder happens in Rob Hoyle (Rob in Adele's body). He is experiencing only three symptoms. The symptoms are Rob's work devotion, Rob's saving the unessential things, and Rob's stubbornness. He always goes to the gym every week, keeping the old book and Adele's photos, and he prepares the details carefully when he talks to Louise for the first time. Additionally,

Rob devises an evil plan and abuses the astral projection to get what he secretly wants.

REFERENCES

- Abrams, M.H. 1999. *A Glossary of Literary Terms (seventh edition)*. Boston. Earl McPeck.
- American Psychiatric Association. 2013. *Diagnostic and statistical manual of mental disorders: DSM-5 (5th edition)*. Washington. American Psychiatric Publishing.
- Anderson, Hayley. (2021). *Truth about Adele and Rob Teased through colours in Behind Her Eyes*. (Retrieved May 18, 2022 from <https://www.express.co.uk/showbiz/tv-radio/1411573/adele-rob-behind-her-eyes-ending-astral-projection-colours-clues-netflix>).
- Bateman, Anthony and Jeremy Holmes. 1995. *Introduction to Psychoanalysis: Contemporary Theory and Practice*. London. Taylor & Francis Group.
- Behrendt, S. C. (2008). *Contextual Analysis*. (Retrieved July 21, 2022 from <https://english.unl.edu/sbehrendt/StudyQuestions/ContextualAnalysis.html>).
- Belsebuub. 2013. *The Astral Codex: Out-of-Body Experiences and Lucid Dreaming for Spiritual Knowledge (4th edition)*. Mystical Life Publications Ltd.
- Bennett, A., & Royle, Nicholas. 2004. *An Introduction to Literature, Criticism and Theory*. Edinburgh Gate. Pearson Education Limited.
- Blanke, O., Faivre, N., & Dieguez, S. 2016. *Leaving body life behind: Out-of body and near-death experience*. In *The neurology of consciousness* (pp. 323-347). Academic Press.
- Brown, Blain. 2012. *Cinematography Theory and Practice: Image Making for Cinematographers and Directors (2nd edition)*. Waltham. Focal Press.
- Chaney, Jen. 2021. *Okay, Let's Talk About 'Behind Her Eyes' Double Twist Ending*. (Retrieved May 18, 2022 from <https://www.vulture.com/article/behind-her-eyes-finale-twist-explained-analysis.html>).
- Creswell, John W. 2014. *Research Design: Qualitative, Quantitative, and Mixed Methods Approach (fourth edition)*. Singapore. Sage Publication.
- DeGracia, D. J. 1997. *Paradigms of Consciousness During Sleep*. Unpublished paper at.
- Diedrich, A., & Voderholzer, U. 2015. "Obsessive-compulsive personality disorder: a current review. *Current psychiatry reports*, 17(2), 1-10.
- Esman, A. H. 1989. *Psychoanalysis and general psychiatry: obsessive-compulsive disorder as paradigm*. *Journal of the American Psychoanalytic Association*, 37(2), 319-336. <https://doi.org/10.1177/000306518903700203>.
- Fineberg, N. A., Sharma, P., Sivakumaran, T., Sahakian, B., & Chamberlain, S. R. *obsessive-compulsive personality disorder belong within the obsessive-compulsive spectrum?*. *CNS spectrum*, 12(6), 467-482. <https://doi.org/10.1017/s1092852900015340>.
- George, Marry W. 2008. *The Elements of Library Research: What Every Student Need to Know*. Princeton. Princeton University Press.

- Hall, Calvin Springer. 1954. *A Primer of Freudian Psychology*. New York. The New American Library.
- Zahra, F. 2021. *THE REFLECTION OF PARASOMNIA (NIGHT TERRORS AND SLEEPWALKING) AND LUCID DREAMING THAT LEADS TO OUT-OF-BODY EXPERIENCE IN SARAH PINBOROUGH'S NOVEL BEHIND HER EYES* (Doctoral dissertation, Unsada).
- Heller, Sharon. 2005. *Freud A to Z*. New Jersey. Wiley.
- Kennedy, X. J. 1991. *An Introduction to Fiction*. New York. Harper Collins.
- Klarer, Mario. 2004. *An Introduction to Literary Studies*. London. Routledge.
- McClure, D. 2007. *Astral Projection Techniques*. (Retrieved 8 February, 2023 from <https://heru-ra-ha.tripod.com/library/aptech.html>).
- Pickering, James H., & Hoepfer, Jeffrey D. 1981. *Concise Companion to Literature*. New York. Macmillan.
- Pocklington, Rebecca. (2021). *Netflix's Behind Her Eyes Decoded - from lucid dreaming to astral projection - and how you could learn to do it too*. (Retrieved May 18, 2022 from <https://www.thesun.co.uk/tv/14163133/netflix-behind-her-eyes-lucid-dreaming-astral-projection/>).
- Priya, S. S., & Jain, D. 2021. *The Potentials of Subconscious Mind*.
- Robert, Edgar V., & Jacobs, Henry E. 1986. *Literature: An Introduction to Reading and Writing*. Englewood Cliffs, N.J. Prentice Hall.
- Rowland, T. A., Jainer, A. K., & Panchal, R. 2017. *Living with obsessional personality*. BJPsych bulletin, 41(6), 366-367. (Retrieved from <https://doi.org/10.1192/pb.41.6.366a>).
- Tiara Ananda, H. 2019. *The Reflection of Rob Hoyle's Obsessive Love toward David Martin in Sarah Pinborough's Novel Behind Her Eyes* (Doctoral dissertation, Universitas Darma Persada).
- Stanton, Robert. 1965. *An Intoduction to Fiction*. New York. Holt, Rinehard and Winston.
- Wellek, R., & Warren, A. 1956. *Theory of Literature*. New York. A Harvest Book.
- White. M. 1985. *Television Genres: Intertextuality*. Journal of Film and Video, 37(3), 41-47. (Retrieved from <http://www.jstor.org/stable/20687673>).