

ISBN: 978-602-61209-0-8



ICASH

Improving health and well-being for better society

International Conference on Applied Science and Health (ICASH) 2017 Book of Proceedings

Institute for Population and Social Research
Mahidol University, Salaya, Thailand

February 23, 2017

ISSN 2579-4434 (Online)

Supported by:



<http://icash.inschool.id>



Proceedings of the International Conference on Applied Science and Health

Journal Content

Search

Search Scope

All ▾

Search

No 1 (2017)

A joint conference between Diponegoro University, Universitas 'Aisyiyah Yogyakarta and Institute for Population and Social Research Mahidol University Thailand

Browse

"Improving health and well-being for better society"

Health and well-being is a fundamental right of every human being. Government of every nation responsible to provide facilities and supporting policies to enable people accessing health care services. As the Sustainable Development Goals have highlighted the commitment to end the epidemics of AIDS, tuberculosis, malaria and other communicable diseases by 2030 by putting good health and well-being as the indicator, it is important to review the current situation to provide the policy makers and government designing future health programs. Not only government, individuals as community members are also responsible for their own health and well-being. Better society can be established when governments, community members, and private sectors are working together at the same direction to reach the goals.

The joint conference aims to exchange the knowledge and experiences to gain better understanding of the most important issues in the South East Asia region. Experts, practitioners, professionals and students from three parties will be invited to share their expertises, experiences, and furthermore, to

provide evidence-based studies to direct the government and policy makers in designing strategic planning for the future growth and development of the regions.

We do believe that the success of this event will benefit the mankind, especially the governments and policy makers in designing strategic planning for the future growth and development of South East Asian countries, as well as for the scientists, scholars, professionals and practitioners in order to keep updated with the latest issues of applied science and health.

Indexed by



Table of Contents

User

Username

Password

Remember me

Login



INTERNATIONAL

SCIENTIFIC

REVIEWERS

LOCAL

SCIENTIFIC

REVIEWERS

COMMITTEE

PREFACE

Articles



ANALYSIS OF HEAT EXPOSURE PREVENTION

ONSTREET VENDORS WORKERS AROUND

DIPONEGORO UNIVERSITY CAMPUS SEMARANG

<http://publications.inschool.id/index.php/icash/article/view/2>

Baju Widjasena, Siswi Jayanti

RELATIONSHIP BETWEEN JOB STRESS AND FRAUD

RISK ON EMPLOYEES AT THE NATIONAL EYE CENTER

HOSPITAL X

<http://publications.inschool.id/index.php/icash/article/view/3>

Suhat Suhat, Furi Destiana Umami, Gurdani Yogisutanti

UNMET NEED FOR FAMILY PLANNING PROGRAM; A

SITUATIONAL ANALYSIS OF BIRTH SPACING AND

LIMITING AMONG REPRODUCTIVE AGE WOMEN IN

PANGKALPINANG CITY, BANGKA BELITUNG

PROVINCE INDONESIA

<http://publications.inschool.id/index.php/icash/article/view/5>

Antarini Antarini, Siti Masfiah, Ayu Fitriani, Lili Junaidi

FACTORS AFFECTING EMPLOYEE PERFORMANCE:

CASE STUDY AT BEDMATA HATI HOSPITAL DI III

Semarang,Indonesia 6 mins ago
Indonesia from scholar.google.com
1 hours ago
Indonesia from
publications.inschool.id 1 hours ago
Indonesia from scholar.google.com
1 hours ago
Indonesia from
publications.inschool.id 1 hours ago
Pekalongan,Indonesia viewed THE
EFFECT OF MASSAGE AND MUSIC
THERAPY FOR PREMATURE
INFANTS: A LITERATURE REVIEW |
Ayuningrum | Proceedings of the
International Conference on Applied
Science and Health from
scholar.google.co.id 2 hours ago
Worcester, South Africa from
scholar.google.co.za 7 hours ago
Bangkok, Thailand viewed
Proceedings of the International
Conference on Applied Science and Health

CASE STUDY AT PERMATAHATI HOSPITAL NIAU,

INDONESIA

(<http://publications.inschool.id/index.php/icash/article/view/7>)

Hetty Ismainar, Sandi Iljanto, Efrianti Efrianti

**KNOWLEDGE AND MOTIVATION OF WOMAN IN
REPRODUCTIVE AGE GIVEN HEALTH EDUCATION
ABOUT EARLY DETECTION OF CERVICAL CANCER**

(<http://publications.inschool.id/index.php/icash/article/view/8>)

Arum Estiyani, Sigit Ambar W, Ima Syamrotul, Wulan Margiana

**PREGNANCY EXERCISES AND DELIVERY PROCESS IN
MOTHERS GIVING BIRTH AT SUMOWONO HEALTH
CENTER SEMARANG REGENCY**

(<http://publications.inschool.id/index.php/icash/article/view/9>)

Dwi Okta Diarini, Yuliaji Siswanto, Heni Hirawati Pranoto, Ima Syamrotul,
Wulan Margiana, Hamdiah Hamdiah

**FACTORS AFFECTING THE OCCURRENCE CARIES
DENTAL ON ELEMENTARY SCHOOL STUDENTS IN SD N
PADANGSARI II BANYUMANIK SEMARANG**

(<http://publications.inschool.id/index.php/icash/article/view/10>)

Hermien Nugraheni, Tri Wiyatini, Maria Okta Afa

**THE POPULATION OF FLIES IN CIKOLOTOK LANDFILL,
PASAWAHAN DISTRICT, PURWAKARTA REGENCY,
INDONESIA**

(<http://publications.inschool.id/index.php/icash/article/view/11>)

Danang Wahansa Sugiarto, Retno Hestningsih, Rully Rahadian

**THE EVALUATION OF EARLY INITIATION
BREASTFEEDING PRACTICE in Dr. mohammad hoessin**

hospital palembang

(<http://publications.inschool.id/index.php/icash/article/view/12>)

Nuswil Bernolian, Amal C. Sjaaf

**ASSOCIATION OF PREMENTRUAL SYNDROME TO
STRESS INCIDENT AMONG XI GRADERS IN
YOGYAKARTA, INDONESIA**

(<http://publications.inschool.id/index.php/icash/article/view/13>)

Aisya Maharani Destiyi, Erianda Nur Destiyi, Dhaby Kusnia Utami, Destiyi

**SHOULDER FLEXIBILITY IN COLOR GUARD PLAYER
FOLLOWING POSTERIOR SHOULDER STRETCHING
AND MUSCLE ENERGY TECHNIQUE**

(<http://publications.inschool.id/index.php/icash/article/view/14>)

Tria Fitri Nurjani, Hilmi Zadah Faidlullah

**THE RELATIONSHIP BETWEEN AGE AND PARITY WITH
MYOMA UTERI IN DR. H. SOEWONDO HOSPITAL
KENDAL**

(<http://publications.inschool.id/index.php/icash/article/view/15>)

Dian Kusumaningtyas, Sari Ardiyanti, Norwidya Priansiska, Winda Windiyani

**NURSE'S ATTITUDE TOWARD PATIENT SAFETY POLICY
IN BALI ROYAL HOSPITAL, INDONESIA:
INDIVIDUALIZED APPROACH USING HEALTH BELIEF
MODEL**

(<http://publications.inschool.id/index.php/icash/article/view/16>)

Dewa Ayu Dyah Widya, Adang Bachtiar, Dumilah Ayuningtyas, Vetty Yulianty Permanasari

**A QUALITATIVE STUDY: EVALUATION OF WAITING
TIME IN REGISTRATION FROM HUMAN RESOURCES
WITH MALCOM BALDRIGE APPROACH**

(<http://publications.inschool.id/index.php/icash/article/view/17>)

Sukaria Susana Br. Ginting, Adang Bachtiar

**FACTORS INFLUENCING PATIENT SATISFACTION A
SYSTEMATIC REVIEW**

(<http://publications.inschool.id/index.php/icash/article/view/18>)

Edwin Zakaria

**TEACHERS AS AGENTS OF CHANGE: SCHOOL-BASED
DIAGNOSIS AND TREATMENT OF MALARIA
POSITIVELY IMPACTS CHILD MORBIDITY**

(<http://publications.inschool.id/index.php/icash/article/view/19>)

Ronald Mukisa, Andrew Macnab, Sharif Mutabazi, Rachel Steed

HOME BASED CARE BY PROVIDING PREVENTION OF

MOTHER- TO-CHILD TRANSMISSION (PMTCT)

HANDBOOK ON WOMEN'S PERCEPTION OF HIV/AIDS

PREVENTION IN MOTHER TO CHILD IN PURWOKERTO

<http://publications.inschool.id/index.php/icash/article/view/20>

Walid Walid, Dina Indrati Dyah Sulistyowati, Mardiyono Mardiyono, Ratifah Ratifah

THORAX MULTI-SLICE COMPUTER TOMOGRAPHY

(MSCT) EXAMINATION TECHNIQUE IN THE CASE OF

MEDIASTINUM TUMOR AT RADIOLOGY INSTALATION

OF SEMARANG DISTRICT GENERAL HOSPITAL

<http://publications.inschool.id/index.php/icash/article/view/21>

Ike Mayasari, Hermina Sukmaningtyas, Ardi Soesilo Wibowo, Aris Santjaka, M. Choerul Anwar, Leny Latifah

PREGNANT EXERCISE INFLUENCE ON THE BABY'S

BIRTH WEIGHT AND POSTPARTUM HEMORRHAGE

<http://publications.inschool.id/index.php/icash/article/view/22>

Siti Fatimah, M. Zen Rahfiludin, Apoina Kartini

KNOWLEDGE AS DETERMINANTS INCREASE CLEAN

AND HEALTHY LIVING BEHAVIORS AMONG STUDENTS

IN GENERAL PRIMARY SCHOOL 07 LANDAU-LEBAN

SUB DISTRICT MELAWI IN 2015

<http://publications.inschool.id/index.php/icash/article/view/23>

Sriwidodo Sriwidodo, Santosa Santosa

COST EFFECTIVENESS AND EFFICIENCY ANALYSIS OF

HOSPITAL WASTEWATER TREATMENT PLANT: A

SYSTEMATIC REVIEW

<http://publications.inschool.id/index.php/icash/article/view/24>

Catherine Maname Uli Nainggolan, Vetty Yulianty Permanasari

EFFECT OF HEAT STRESS AND NUTRITION STATUS ON

WORKER FATIGUE AT TRADITIONAL MUSIC GAMELAN

INDUSTRY

<http://publications.inschool.id/index.php/icash/article/view/25>

Lusi Ismayenti

POTENTIAL CHEMOPREVENTIVE AGENT: STUDY OF

**APOPTOSIS IN THE EXTRACTS OF SPONGE-
ASSOCIATED FUNGI FROM YOGYAKARTA AGAINST
CERVICAL CANCER HeLa CELL LINE**

<http://publications.inschool.id/index.php/icash/article/view/26>

Eka Ramadhani, Fajar Priyambada, Abrory Agus Cahya Pramana, Aditya Nur Subchan, Gian Aditya Pertiwi, Raden Aditya Aryandi Setiawibawa, Hendy Eka Putra, Nur Rofika Ayu Shinta Amalia, Nastiti Wijayanti

**THE BENEFITS OF AUTOMATED DISPENSING MACHINE
AS SOLUTIONS FOR HOSPITAL PHARMACY IN
INDONESIA: A SYSTEMATIC REVIEW**

<http://publications.inschool.id/index.php/icash/article/view/27>

Haryman Utama Suryadinata

**SCOURING-RUSH HORSETAIL'S (Equisetum hyemale)
CAPABILITY TO REDUCE DETERGENT, COD AND
PHOSPHAT (PO₄) LEVELS OF LAUNDRY
WASTEWATERIN PURWOKERTO IN 2016**

<http://publications.inschool.id/index.php/icash/article/view/28>

Hari Rudijanto Indro Wardono, Sugeng Abdullah, Zaeni Budiono

**FACTORS RELATED WITH HOSPITAL INFORMATION
SYSTEM (HIMS) POOR PERFORMANCE FROM USER'S
EVALUATIONS THOROUGH MALCOLM BALDRIGE
CONCEPT IN KERTHA USADA HOSPITAL SINGARAJA-
BALI**

<http://publications.inschool.id/index.php/icash/article/view/29>

I Wayan Parna Arianta

POSTPARTUM CARE IN CENTRAL JAVA TRADITION

<http://publications.inschool.id/index.php/icash/article/view/30>

Ita Rahmawati

**BODY WEIGHT EFFECT ON JOINT SPACE WIDTH AND
TIBIO FEMORAL ANGLE OF KNEE JOINT
MEASUREMENT FOR OSTEOARTHRITIS DETECTION
USING IMAGEJ**

<http://publications.inschool.id/index.php/icash/article/view/31>

Agung Nugroho Setiawan, Suryono Suryono, Sugiyanto Sugiyanto, Fatimah Fatimah, Gatot Murti Wibowo

**OPTIMIZATION OF R-FACTOR AT GRAPPA PARALLEL
ACQUISITION TECHNIQUE ON THE IMAGE
INFORMATION T2 AXIAL BRAIN MRI**

<http://publications.inschool.id/index.php/icash/article/view/32>

Saifudin Saifudin, Hermina Sukmaningtyas, Rini Indrati, Aris Santjaka

**RELATIONSHIP BETWEEN EARLY MOBILIZATION AND
FIRST URINARY ELIMINATION ON MOTHER
POSTPARTUM**

<http://publications.inschool.id/index.php/icash/article/view/33>

Fulatul Anifah, Rizki S Emilia, Syuhrotut Taufiqoh, Nurul F Hidayati

**COMPARISON TRANSCUTANEOUS ELECTRICAL NERVE
STIMULATION KINESIO TAPING AND DECREASING TO
SCALE BACK PAIN IN PREGNANT WOMEN UNDER
THIRD TRIMESTER IN PUBLIC HEALTH DISTRICT
JUWIRING KLATEN, INDONESIA**

<http://publications.inschool.id/index.php/icash/article/view/34>

Sri Wahyuni, Lilik Hartati, Novita P. Dewi, Jusmala Sari

**RELATIONSHIP OF EDUCATION, FAMILY INCOME,
COMPLIANCE AND PROCEDURE CONSUMPTION OF
IRON TABLET TO ANEMIA AMONG PREGNANT
WOMEN**

<http://publications.inschool.id/index.php/icash/article/view/35>

Septi Indah Permata Sari, Aris Noviani, Sri Nuriyaty Masdiputri, Nurul Inayah

**RELATIONSHIP BETWEEN MOTHER'S PARTICIPATION
IN SUPPORT GROUPS WITH EXCLUSIVE**

**BREASTFEEDING PRACTICE IN PUSKESMAS UMBUL
HARJO I YOGYAKARTA, INDONESIA**

<http://publications.inschool.id/index.php/icash/article/view/67>

Nur Laela, Siti Naili Ilmiyani, Etni Dwi Astuti, Warsiti Warsiti

**THE CORRELATION AMONG DURATION OF ORAL
CONTRACEPTION WITH THE INCIDENCE OF MELASMA
IN SUMBERWUDI, LAMONGAN, EAST JAVA,
INDONESIA**

INDONESIA

(<http://publications.inschool.id/index.php/icash/article/view/37>)

Dina Sulviana Damayanti, Putu Irma Pratiwi, Gracea Petricka

**THE RELATIONSHIP OF FAMILY SUPPORT TO
MOTIVATION (INTENTION) FOR MEDICAL TREATMENT
IN PATIENTS WITH CERVICAL CANCER IN LIGAR
MEDIKA CLINIC, WEST JAVA - INDONESIA**

(<http://publications.inschool.id/index.php/icash/article/view/38>)

Aulia Ridla Fauzi, Sri Yuniarti

**STUDENTS COPING MECHANISM TOWARD STRESS IN
WRITING SCIENTIFIC PAPERS AT SARI MULIA
MIDWIFERY ACADEMY BANJARMASIN, INDONESIA**

(<http://publications.inschool.id/index.php/icash/article/view/39>)

Widya Astutik, Aulia Rahmi

**FACTORS ASSOCIATED WITH IRON ANEMIA
DEFICIENCY IN CHILDREN AGED 12 TO 36 MONTHS IN
PUBLIC HEALTH CENTER JATILAWANG, BANYUMAS
CENTRAL JAVA**

(<http://publications.inschool.id/index.php/icash/article/view/40>)

Sawitri Dewi, Purnomo Suryantoro, Sulistyaningsih Sulistyaningsih

**EFFECT OF VARIATION IN THE NUMBER OF THICK
SLAB ON THE SCAN TIME AND IMAGE INFORMATION
ON THE EXAMINATION OF MAGNETIC RESONANCE
CHOLANGIOPANCREATOGRAPHY (MRCP)**

(<http://publications.inschool.id/index.php/icash/article/view/41>)

Ni Putu Rita Jeniyanthi, Leny Latifah, Donny Kristanto Mulyantoro,
Sudiyono Sudiyono, Faisal Amri

**IMPLEMENTATION AND EVALUATION OF BREAST
CARE TO THE CHILDBED MOTHER IN COMBINED
WARD OF PUSKESMAS TEGALREJO YOGYAKARTA,
INDONESIA**

(<http://publications.inschool.id/index.php/icash/article/view/42>)

Rosmawati Rosmawati, Fitri H. Susanto, Retno Purwanti

**EFFECTIVENESS OF PREGNANCY EXERCISE ON PAIN
REDUCTION AMONG WOMEN IN THE FIRST STAGE OF**

REDUCTION AMONG WOMEN IN THE FIRST STAGE OF LABOR

(<http://publications.inschool.id/index.php/icash/article/view/43>)

Septa Sari, Dwi Handayani, Pratiwi Puji, Nurhidayah Nurhidayah

THE DESIGN OF RADIOLOGY VIEWING BOX USING POTENTIOMETER SYSTEM

(<http://publications.inschool.id/index.php/icash/article/view/44>)

Anak Agung Aris Diartama, Susy Suswaty, Win Priantoro, Sudiyono Sudiyono, Sugiyanto Sugiyanto, Muhammad Choeroel Anwar, Leny Latifah, Aris Santjaka, Faisal Amri, Donny Kristanto Mulyantoro

CONSTRUCTION DESIGN OF AN ASSISTING TOOL FOR IMMOBILIZATION IN THORAX AND ABDOMEN EXAMINATION ON PEDIATRIC PATIENTS

(<http://publications.inschool.id/index.php/icash/article/view/45>)

Arif Budiman, Rini Indrati, M. Choerul Anwar, Sudiyono Sudiyono, Jeffri Ardiyanto, Donny Kristanto Mulyantoro, Leny Latifah

RISK FACTORS OF BIRTH ASPHYXIA IN PKU MUHAMMADIYAH HOSPITAL, BANTUL

(<http://publications.inschool.id/index.php/icash/article/view/46>)

Eka Riana, Fitria Yulastini, Umi Khasanah

CORRELATION BETWEEN MOTIVATION AND STUDENTS' ACHIEVEMENT IN MIDWIFERY CARE AND DELIVERY PROGRAM IN AISYIYAH UNIVERSITY YOGYAKARTA

(<http://publications.inschool.id/index.php/icash/article/view/47>)

Fitria Yulastini, Novita Puspita Dewi, Dwi Handayani, Gracea Petricka

THE RELATIONSHIP BETWEEN KNOWLEDGE OF HEPATITIS B-0 IMMUNIZATION AND HEPATITIS B-0 IMMUNIZATION TIMING IN JETIS PRIMARY HEALTH CENTRE, YOGYAKARTA, INDONESIA

(<http://publications.inschool.id/index.php/icash/article/view/48>)

Nindya Mayangsari, Sari Ardiyanti

INFLUENCE OF KEGEL GYMNASTICS ON PRIMIGRAVIDA PREGNANCY TOWARDS THE INCIDENCE OF A PERINEAL RUPTURE IN BASIC

ESSENTIAL OBSTETRIC CARE NEONATES SIIDAKARTA

**ESSENTIAL OBSTETRIC CARE NEONATES SURABAYA,
INDONESIA**

(<http://publications.inschool.id/index.php/icash/article/view/49>)

Umi Khasanah, Fitria Yulastini

**RELATIONSHIP BETWEEN KNOWLEDGE, ATTITUDE,
AND PRACTICE WITH APPLICATION**

**DOCUMENTATION PARTOGRAPH BY MIDWIFERY
STUDENTS OF BUNGA KALIMANTAN BANJARMASIN**

(<http://publications.inschool.id/index.php/icash/article/view/50>)

Aulia Rahmi, Widya Astutik

**KNOWLEDGE OF SIDE EFFECTS AND ITS ASSOCIATION
TO COMPLIANCE IN IRON TABLETS CONSUMPTION
AMONG THIRD TRIMESTER PREGNANT WOMEN**

(<http://publications.inschool.id/index.php/icash/article/view/51>)

Nurhidayah Nurhidayah, Dwi Handayani, Pratiwi Puji Lestari, Fitria Yulastini

**THE RELATIONSHIP BETWEEN FAMILY SUPPORTS
TOWARDS THE EARLY COMPLEMENTARY FEEDING
FOR 0-6 MONTHS BABIES IN PUBLIC HEALTH CENTER,
SEWON I BANTUL, INDONESIA**

(<http://publications.inschool.id/index.php/icash/article/view/52>)

Apriani Tiasna, Dhesi Ari Astutik

**RELATIONSHIP BETWEEN LEARNING MOTIVATION TO
LEARNING ACHIEVEMENT AMONG MIDWIFERY
STUDENTS IN IN 'AISYIYAH UNIVERSITY YOGYAKARTA,
INDONESIA**

(<http://publications.inschool.id/index.php/icash/article/view/53>)

Jusmala Sari, Lilik Hartati, Novita Puspita Dewi, Isti Chana Zuliyati

**THE RELATIONSHIP BETWEEN WEIGHT INCREASES
WITH UPPER ARM CIRCUMFERENCE AMONG THIRD
TRIMESTER PREGNANT WOMEN IN YOGYAKARTA,
INDONESIA**

(<http://publications.inschool.id/index.php/icash/article/view/54>)

Deby Kurnia Utami, Pratiwi Puji Lestari, Ajeng Maharani Pratiwi

**THE DURATION OF PERINEAL WOUND HEALING
BETWEEN RASTE AND INTEDDI IDTEN SITI IDE AMONG**

**BETWEEN BASTE AND INTERRUPTED SUTURE AMONG
POSTPARTUM MOTHERS IN BANTUL, YOGYAKARTA,
INDONESIA**

(<http://publications.inschool.id/index.php/icash/article/view/55>)

Isti Chana Zuliyati, Umu Hani Edi Nawangsih, Dian Pratiwi, Ajeng Hayuning Tiyas

**THE RELATIONSHIP BETWEEN EMOTIONAL
INTELLIGENCE AND ACADEMIC ACHIEVEMENT OF
MIDWIFERY STUDENTS IN STIKES MEDIKA CIKARANG,
INDONESIA**

(<http://publications.inschool.id/index.php/icash/article/view/56>)

Ajeng Hayuning Tiyas, Dian Pratiwi, Istichana Zuliyati

**THE INFLUENCE OF DEEP BREATHING RELAXATION
TECHNIQUES TO DECREASE PAIN LEVELS IN THE
MOTHERS INPARTU ACTIVE PHASE OF THE FIRST
STAGE AT KERTHA USADA HOSPITAL SINGARAJA**

(<http://publications.inschool.id/index.php/icash/article/view/57>)

Putu Irma Pratiwi, Dina Sulviana Damayanti, Grace Petricka

**THE IMPACT OF COMPLEMENTARY FEEDING TYPE ON
THE NUTRITION STATUS OF INFANTS 6 TO 12 MONTHS
OF AGE IN SUBURBAN SEMARANG INDONESIA**

(<http://publications.inschool.id/index.php/icash/article/view/58>)

Suyatno Suyatno

**FARMER EMPOWERMENT IN REDUCING EXPOSURE
AND RESIDUAL PESTICIDES IN VEGETABLES: A CROSS
SECTIONAL STUDY AT KUTAI KARTANEGARA**

DISTRICT, INDONESIA

(<http://publications.inschool.id/index.php/icash/article/view/59>)

Ryan Ningsih, Ratih Wirapuspita

**MODE OF DELIVERY, HOSPITAL OWNERSHIP AND
PREDICTORS MATERNITY LENGTH OF STAY IN TWO
HOSPITALS IN JAKARTA**

(<http://publications.inschool.id/index.php/icash/article/view/60>)

Celih Octavari

**NURSES' ROLES IN HEALTH PROMOTION PRACTICE: A
SYSTEMATIC REVIEW**

(<http://publications.inschool.id/index.php/icash/article/view/61>)

Budi Widiyanto

**THE ASSOCIATION BETWEEN KNOWLEDGE AND IRON
TABLET CONSUMPTION AMONG PREGNANT WOMEN
IN PONDOK KACANG, SOUTH TANGERANG CITY,
INDONESIA**

(<http://publications.inschool.id/index.php/icash/article/view/63>)

Siti Riptifah Tri Handari, Munaya Fauziah, Nirmala Harahap, Mohammad
Ainul Maruf

**THE ASSOCIATION BETWEEN HIV AND AIDS
KNOWLEDGE AND UPTAKE OF HIV TESTING AMONG
SEXUALLY ACTIVE YOUNG POPULATION AGE 15-24 IN
DISTRICT MERAUKE, PAPUA PROVINCE, INDONESIA**

(<http://publications.inschool.id/index.php/icash/article/view/64>)

Nurul Azmi

**THE EFFECT OF STUDENTS' RESPONSE IN USING
PROBLEM BASED LEARNING WITH SIMULATION
TOWARD STUDENTS' ACHIEVEMENT (LIGHT
CONCEPT)**

(<http://publications.inschool.id/index.php/icash/article/view/75>)

Ary Norsaputra, Johansyah Johansyah



YAYASAN ALIANSI CENDEKIAWAN INDONESIA THAILAND

Headquarter: Jl. Meranti Timur Dalam IV No.35 Padangsari, Banyumanik, Semarang, Jawa Tengah, Indonesia

ICASH-A31

OPTIMIZATION OF R-FACTOR AT GRAPPA PARALLEL ACQUISITION TECHNIQUE ON THE IMAGE INFORMATION T2 AXIAL BRAIN MRI

Saifudin^{1,*}, Hermina Sukmaningtyas², Rini Indrati¹, Aris Santjaka¹

¹Postgraduate Imaging Diagnostic Program, Semarang Health Polytechnic, Semarang, Indonesia

²Department of Radiology, Kariadi Central Hospital, Semarang, Indonesia

*Corresponding author's email: saifudin.sf89@gmail.com

ABSTRACT

Background: GRAPPA or Generalized Auto-calibrating Partially Parallel Acquisitions is a parallel acquisition technique which can reduce the scan time in MRI examination.

Aims: This study aims to investigate the effect of the R-factor variation of GRAPPA on image anatomical information quality and to determine the optimization value of GRAPPA e-factor to fasten the scan time with acceptable image information quality.

Methods: Eight respondents will perform T2 axial Brain MRI examination with various values of GRAPPA R-factor (1 to 7), evaluation was conducted with questionnaire which was given to 3 radiologists to assess the anatomical structure of the lateral ventricle, thalamus, caudate nucleus, lentiform nucleus, internal capsule and background area. Data from respondents were then tested with Spearman test and Friedman test.

Results: Statistics test showed that there was significant effect of GRAPPA parallel acquisition technique on the anatomical image information quality of T2 axial Brain MRI (p value of $0,001 < 0,05$) and the correlation direction was negative, in which the higher the value of r-factor GRAPPA used, the lower the quality of anatomical image information. Based on the result of mean rank, image with optimal image anatomical information quality was image with GRAPPA R-factor of 1 (mean rank = 6.01), but image anatomical information quality with GRAPPA R-factor of 3 was acceptable with fast scan time (opinion of 75 % of all radiologists).

Conclusion: R-factor at GRAPPA parallel acquisition technique could reduce scan time, but the higher the value of r-factor GRAPPA used, the lower the quality of image anatomical information.

Keywords: r-factor, GRAPPA, T2 Axial Brain MRI.

INTRODUCTION

Magnetic resonance imaging or MRI is a medical diagnostic examination on medicine especially radiology with the use of high magnetic field and radiofrequency to analyze and visualize the soft tissues, blood flow, and function of the body's metabolism [1]. The application is high magnetic field of 0.064 Tesla - 1.5 Tesla (1 tesla=1000 Gauss) and resonance to hydrogen nuclei [2]. In addition to image quality, scan time is also a very important thing to be considered in MRI examination. MRI Scanner has limitation in the speed of scan time due to technical issues and functions related to the magnetic field gradient [3]. With parallel MRI, reduction in acquisition time can be achieved without the need to increase the performance of a magnetic field gradient [4].

Parallel magnetic resonance imaging (pMRI) is an advanced technique to improve MRI data acquisition speed by crossing some phase-encoding lines in the k-space while the encoding frequency direction is retained in full [5]. The idea of parallel MRI was introduced in the end of the 1980s,

however, in the 1990s it began to be used in MRI scanning. This technique has been used in many clinical settings since 2000 and the development has been being conducted by experts. Parallel reconstruction technique can be used to improve image quality by increasing the signal to noise ratio, spatial resolution, reduced artifacts and temporal resolution of MRI scans [3].

Parallel imaging has the basic functions of a reduction in scan time and maintain image contrast without requiring a higher gradient performance system [6]. Due to faster image acquisition, parallel imaging in some cases can even significantly improve the image quality [4]. GRAPPA (Generalized Auto-calibrating Partially Parallel Acquisitions) is one method used to reconstruct the data by speeding up scan time by using a parallel MRI. The technique is based by finding correlations in the data obtained from a multi-coil MRI machine [7]. GRAPPA concept was introduced by Griswold in 2002 as a more general view of VD-SMASH AUTO and produced better image quality overall because of the increased artifacts suppression [8].

GRAPPA is a more general implementation compared to VD-AUTO-SMASH. Although approach [9]. Even though those two techniques have the same acquisition, but there is a significant difference in the reconstruction of how to eliminate the k-space lines. The fundamental difference lies in the coil signal components which only have a single auto calibration signal and not the signal components thus lowering the linear weight to eliminate the k-space line in each coil component [4].

During preliminary study in Telogorejo Hospital, Semarang, the authors often found an TSE Brain Axial T2 MRI examination which used parallel acquisition technique of GRAPPA mode with R-factor of 2, while R-factor in GRAPPA parallel acquisition technique contained in MRI machine of Siemens MAGNETOM Avanto 1.5 Tesla is 1-7. From the above problems, the authors would like to find out the optimal use of GRAPPA application in order to obtain optimal image quality with fast scan time. This study is expected to be able to determine the effect of changes in GRAPPA R-factor on image anatomical information quality of Brain MRI of T2 TSE Axial sequence, as well as to determine the value of GRAPPA R-factor that can display the most optimal MRI image anatomical information.

METHODS

The type of research is a quasi-experimental employed posttest only control group design. This study was conducted with the following phases:

Preparation phase

Five respondents were chosen by non-randomization, with criteria: health respondent, man or woman in range 25-30 age, non claustrophobia, and agree to participant at research with signature on Informed Consent. Brain MRI examination of Axial slice with T2 TSE sequence was performed by using 1.5 Tesla MRI equipment at Telogorejo Hospital Semarang.

Implementation phase

Performed Brain MRI imaging of Axial slice with T2 TSE sequence. Respondents were in supine position, head first, used an array head coil and isocentre in the nation. Created T2 Axial slice with the changes in the variation of GRAPPA R-factor value of 1-7 with other parameters is fixed. Prepared and printed out the MRI image that would be observed by the radiologist, in the form of a single sheet of film that contained Axial slice Brain MRI image of T2 TSE sequence with R-factor variation of 1-7. From the image slice results, one image was selected to show the lateral ventricle, thalamus, caudate nucleus, the lentiform nucleus, and the internal capsule in one image, namely axial slice in the height of corpus callosum.

Assessment phase

A qualitative assessment has evaluated by 3 radiologist to evaluate in the form of general image contrast and observed the clarity of diagnostic information (the lateral ventricle, thalamus, caudate nucleus, lentiform nucleus, and internal capsule), and selected the image of the best (the most optimal) R-Factor variation. The radiologists have twenty-year experience evaluate MR image, especially Brain Imaging.

Data analysis

Data was analyzed by using Spearman correlation test in SPSS to determinethe effect of GRAPPA R-factor on theimage qualityof lateral ventricle, thalamus, caudate nucleus, the lentiform nucleus, and the internal capsule in one image, namely axial slice in the height of corpus callosum, to determine the effective value of R-factor to produce an optimal image (acceptable image quality with fast time scanning), Friedman test was conducted by looking at the highest mean rank value of each variation of R-factor used, as well as to determine the effective R-factor value to produce optimal images.

RESULTS

The effect of GRAPPA R-factor on the Brain MRI image anatomical information quality of Axial Slice of T2 TSE sequence

The effect of GRAPPA R-factor variation on anatomy above can be explained in the following table.

Table 1. Result of Spearman Correlation Test to explaineffect of GRAPPA R-factor variation on Brain MR image anatomical information

Tissue	<i>R</i> value	<i>P</i> value
Lateral ventricle	-0,854	< 0,001
Thalamus	-0,757	< 0,001
Caudate nucleus	-0,874	< 0,001
Lentiform nucleus	-0,835	< 0,001
Internal capsule	-0,851	< 0,001
Background	-0,83	< 0,001

The correlation test results obtained p value of each anatomy of 0.001 ($p=0.001 < 0.05$), it can be concluded that H_0 was rejected, then H_a was accepted. So in can be concluded that there was a significant relationship between the changes in the GRAPPA R-factor variation on the quality of Brain MRI image anatomical information of axial slice of T2 TSE sequence.

GRAPPA R-factor which can display the optimal quality of image anatomical information Based on the results of questionnaires from three observers (radiologists), all had the same opinion that the most optimal quality of Brain MRI image anatomical information of Axial slice of T2 TSE sequence contained in GRAPPA of 1 with a mean of 6.01, it was also supported by the statistical test results in the mean rank values as follow:

Table 2. Result of mean rank on Friedman Test to Optimization of GRAPPA R-factor on Brain MR image anatomical information

Variance R-Factor	Mean Rank	P value
R-factor of 1	6,01	<0,001
R-factor of 2	5,57	
R-factor of 3	5,21	
R-factor of 4	4,47	
R-factor of 5	2,80	
R-factor of 6	2,24	
R-factor of 7	1,70	

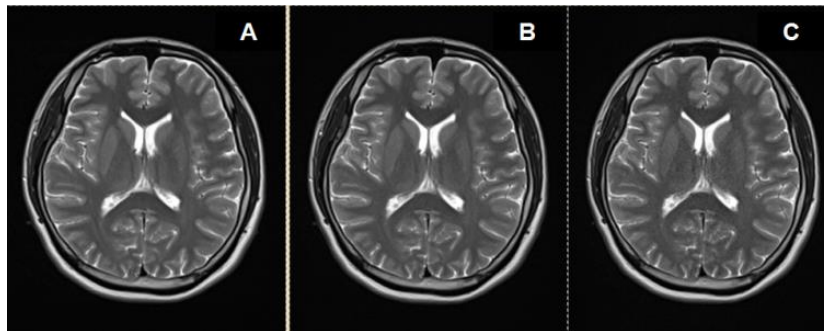


Figure 1. Brain MRI Image with GRAPPA R-factor of A = 1, B = 2, C = 3.

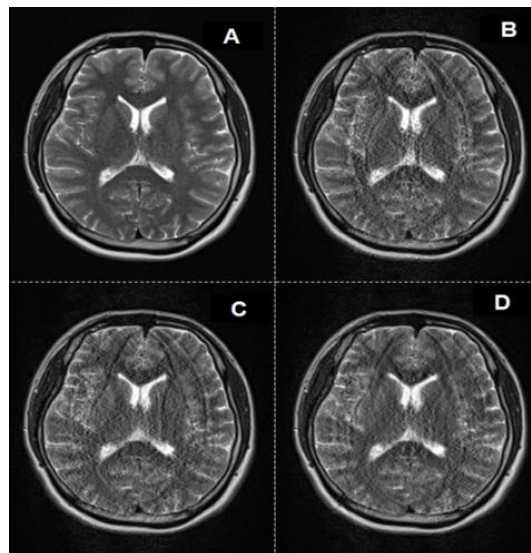
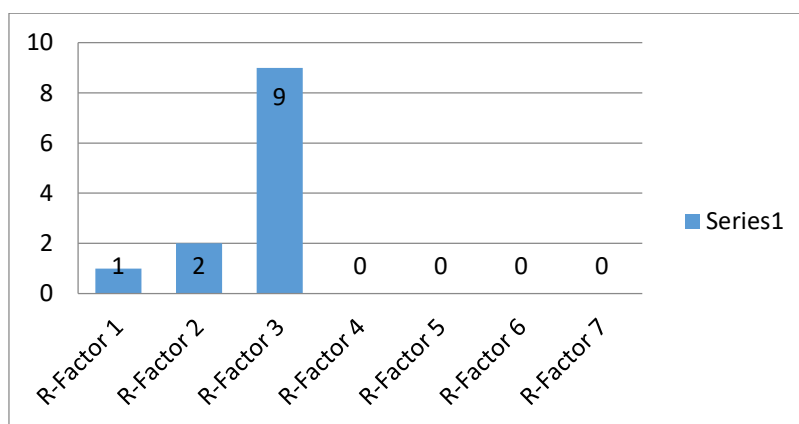


Figure 2. Brain MRI Image with GRAPPA R-factor of A = 4, B = 5, C = 6, D = 7

Based on the results of the questionnaire all observers tended to choose the image of A code in the image by using GRAPPA R-factor of 1, it is also supported by the total score on the Friedman test results with the highest mean rank in GRAPPA 1 of 6.01.

Based on the questions asked by the researchers to the observer it was stated that the use of GRAPPA R-factor of 3 could still display the optimal image anatomy quality with faster scan time so that the duration of MRI examination could also be reduced and would be efficient to time either on the patient or MRI operator. This is consistent with the results of the percentage of 4 (four) images with assessment from 3 (three) observers which indicated that 75% gave opinion that the use of GRAPPA R-factor 3 could still display the optimal image anatomy quality with faster scan time of just 2 minutes. The opinion of GRAPPA Observers with the acceptable image quality with faster time scanning can be explained in the following graph:



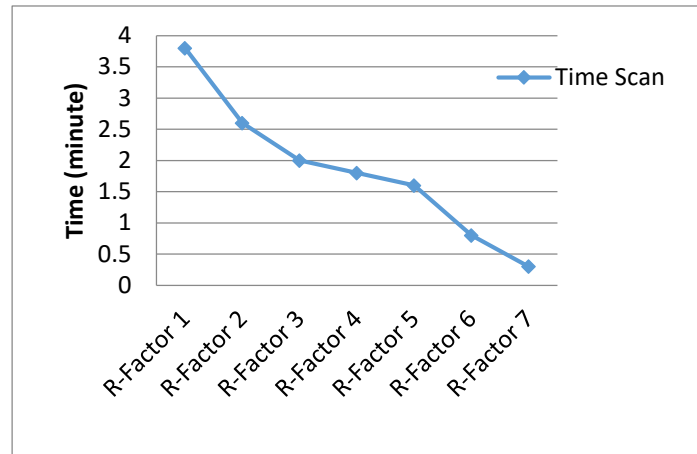
Graph 1. R-factor with optimal image quality with fast time (based opinion observer)

Based on the above explanation, the authors can conclude that using GRAPPA R-factor of 1 would get very good image quality with very fine detail, but with a longer scan time. MRI in patients with non-cooperative condition should reduce noise and artifacts due to the movement of the patients due to the scanning length of time it takes, so it can be fastened by using GRAPPA R-factor of 2 or 3 with similar results as by using GRAPPA R-factor of 1 but with faster scan time.

DISCUSSION

In GRAPPA parallel acquisition techniques there are special parameter called R-factor. This stated the number of coil elements of phased array coils that will affect the scan time [4]. Variations acceleration factor depends on the number of coil elements are used on each plane MRI. This study uses the MRI Siemens Magnetom Avanto 1.5 Tesla with 7 variations R-factor.

If the R-factor rise then the image quality will decline. This was due to the image obtained from the image in the under sampling acquisition by exploiting existing coil channel. So by increasing the R-factor, phase encoding step will be accelerated corresponding R-factor used for sampling are not full fill all of K-space. When the k-space is not fully charged then it will garner little spin echo encoding phase, there will be a reduction in linear data recorded in the image acquisition time, because time image acquisition and data collection is comparable with the number echo of phase encoding [12]. From the display on the monitor, it can be seen directly change the R-factors may affect the scan time. The larger the value of R-factor is used, then the scanning time will be reduced.



Graph 2. Influence R-factor changes to time scanning

In the research, it was found that the effect of R-factor on the quality of the image anatomical information was highly significant (p value = 0.001 < 0.05) in each organ. Increased R-factor to the image anatomical information quality is negative, it is because the final image obtained is the result of a merger of the image in the acquisition of under sampling by exploiting existing coil channel. So by increasing the R-factor of then phase encoding steps will be accelerated according R-factor that is used for sampling that was not full fill all K-space (K-space under sampling). When the k-space is not fully filled then it would garner little spin echo encoding phase, there will be a reduction in linear data recorded in the image acquisition time, because time image acquisition and data collection is comparable with the number echo of phase encoding.

CONCLUSION

Statistical test result of the study received H_a which showed that there was a significant relationship between changes in the GRAPPA R-factor variation on the quality of Brain MRI image anatomical information of Axial slice of TSE T2 sequence ($p=0.001 < 0.05$) with r square in the lateral ventricle, thalamus, caudate nucleus, the lentiform nucleus, internal capsule and background of -0.854; -0.757; -0.874; -0.835; -0.851; -0.863, respectively; which mean that the quality of the anatomical information was caused by the GRAPPA R-factor. The correlation direction of the increase in GRAPPA R- factor on the quality of MRI image anatomical information was negative, which meant that the higher the value of r-factor GRAPPA used, the lower the quality of image anatomical information.

The friedman test results obtained the highest mean rank on the GRAPPA R-factor 1 of 6.01, indicated that the quality of anatomical information the most optimal image was by using GRAPPA R-factor of 1 but with a long scan time. Based on the questions from the researcher, the observers stated that GRAPPA R-factor of 3 could still display the optimal image anatomy quality with faster scan time so that the scan time could be reduced and might also be efficient towards time either on the patient or MRI operator.

The use of GRAPPA R-factor in MRI examination should still maintain optimal image quality and fast scan time. The use of GRAPPA R - factor of 3 can be applied in patients with non-cooperative conditions to reduce noise and artifacts due to the movement of the patients due to the scanning length of time it takes with similar results as by using GRAPPA R-factor of 1 but with faster scan time. This study can be developed by increasing the number of samples so that the results can be more objective.

REFERENCES

- [1] Liney, Gary P. *Magnetic Resonance Imaging (MRI)*. University of California Department of Electrical Engineering and Computer Sciences. 2006
- [2] Notosiswoyo, M., dan Suswaty, S. *Pemanfaatan Magnetic Resonance Imaging (MRI) Sebagai Sarana Diagnosa Pasien*. Media Litbang Kesehatan Volume XIV Nomor 3 tahun 2004. 2004
- [3] Pallamar J. Fruehwald, et.al. Parallel Imaging of the Cervical Spine at 3T: Optimized Trade-Off between Speed and Image Quality. 2012. AJNR. <http://www.ajnr.org/content/33/10/1867.full.pdf+html?sid=10c0f27f-988d-4bda-a41e-8e966ffe2542>
- [4] Blaimer, Martin. et al. *SMASH, SENSE, PILS, GRAPPA: How to Choose the Optimal Method*. Top Magn Reson Imaging, 2004; Volume 15, Number 4.
- [5] Wang, Haifeng. et al. *Cross-Sampled GRAPPA for Parallel MRI*. USA: University of Wisconsin. 2010
- [6] Grosu, Daniel S. Parallel MR Imaging with iPAT More than Just Common SENSE. USA: Siemens Medical. Atau download di www.medical.siemens.com/siemens/it_IT/gg_mr_FBAs/files/MRI_Hot_Topics/Hot_Topics_Parallel_MR_Imaging_with_iPAT.pdf
- [7] Griswold, Mark A. et al. *Generalized Autocalibrating Partially Parallel Acquisitions (GRAPPA)*. Magnetic Resonance in Medicine 2002; 47:1202–1210.
- [8] Schneider, Matthias. *GPGPU for Accelerated GRAPPA Auto calibration in Magnetic Resonance Imaging*. 2008.
- [9] Bhagat Y. A, Emery D. J, Naik S, Yeo T, Beaulieu C. Comparison of Generalized Autocalibrating Partially Parallel Acquisitions and ModifiedSensitivity Encoding for Diffusion Tensor Imaging. 2007. AJNR. <http://www.ajnr.org/content/28/2/293.full.pdf+html?sid=1c3142c7-871d-4720-a17f-be24a4537480>
- [10] Westbrook, Chaterine and Kaut, Carolyne. *MRI in Practice*, Second Edition. Blackwell Science Ltd : United Kingdom. 2011
- [11] Weishaupt, Dominik. et al. *How Does MRI Work? An Introduction to the Physics and Function of Magnetic Resonance Imaging*, Second Edition. ISBN-13 978-3-540-30067-0 Springer Berlin Heidelberg New York. 2006