

ISBN: 978-602-61209-0-8



ICASH

Improving health and well-being for better society

International Conference on Applied Science and Health (ICASH) 2017 Book of Proceedings

Institute for Population and Social Research
Mahidol University, Salaya, Thailand

February 23, 2017

ISSN 2579-4434 (Online)

Supported by:



<http://icash.inschool.id>



Proceedings of the International Conference on Applied Science and Health

Journal Content

Search

Search Scope

All ▾

Search

No 1 (2017)

A joint conference between Diponegoro University, Universitas 'Aisyiyah Yogyakarta and Institute for Population and Social Research Mahidol University Thailand

Browse

"Improving health and well-being for better society"

Health and well-being is a fundamental right of every human being. Government of every nation responsible to provide facilities and supporting policies to enable people accessing health care services. As the Sustainable Development Goals have highlighted the commitment to end the epidemics of AIDS, tuberculosis, malaria and other communicable diseases by 2030 by putting good health and well-being as the indicator, it is important to review the current situation to provide the policy makers and government designing future health programs. Not only government, individuals as community members are also responsible for their own health and well-being. Better society can be established when governments, community members, and private sectors are working together at the same direction to reach the goals.

The joint conference aims to exchange the knowledge and experiences to gain better understanding of the most important issues in the South East Asia region. Experts, practitioners, professionals and students from three parties will be invited to share their expertises, experiences, and furthermore, to

provide evidence-based studies to direct the government and policy makers in designing strategic planning for the future growth and development of the regions.

We do believe that the success of this event will benefit the mankind, especially the governments and policy makers in designing strategic planning for the future growth and development of South East Asian countries, as well as for the scientists, scholars, professionals and practitioners in order to keep updated with the latest issues of applied science and health.

Indexed by



Table of Contents

User

Username

Password

Remember me

Login



INTERNATIONAL

SCIENTIFIC

REVIEWERS

LOCAL

SCIENTIFIC

REVIEWERS

COMMITTEE

PREFACE

Articles

ID 3,636	PH 73
US 981	IR 57
TH 611	CA 55
IN 93	MY 53
GB 76	AU 42

Pageviews: 15,948

FLAG counter

ANALYSIS OF HEAT EXPOSURE PREVENTION

ONSTREET VENDORS WORKERS AROUND

DIPONEGORO UNIVERSITY CAMPUS SEMARANG

(<http://publications.inschool.id/index.php/icash/article/view/2>)

Baju Widjasena, Siswi Jayanti

RELATIONSHIP BETWEEN JOB STRESS AND FRAUD

RISK ON EMPLOYEES AT THE NATIONAL EYE CENTER

HOSPITAL X

(<http://publications.inschool.id/index.php/icash/article/view/3>)

Suhat Suhat, Furi Destiana Umami, Gurdani Yogisutanti

UNMET NEED FOR FAMILY PLANNING PROGRAM; A

SITUATIONAL ANALYSIS OF BIRTH SPACING AND

LIMITING AMONG REPRODUCTIVE AGE WOMEN IN

PANGKALPINANG CITY, BANGKA BELITUNG

PROVINCE INDONESIA

(<http://publications.inschool.id/index.php/icash/article/view/5>)

Antarini Antarini, Siti Masfiah, Ayu Fitriani, Lili Junaidi

FACTORS AFFECTING EMPLOYEE PERFORMANCE:

CASE STUDY AT BEDMATA HATI HOSPITAL DI III

Semarang, Indonesia 6 mins ago
Indonesia from scholar.google.com
1 hours ago
Indonesia from
publications.inschool.id 1 hours ago
Indonesia from scholar.google.com
1 hours ago
Indonesia from
publications.inschool.id 1 hours ago
Pekalongan, Indonesia viewed THE
EFFECT OF MASSAGE AND MUSIC
THERAPY FOR PREMATURE
INFANTS: A LITERATURE REVIEW |
Ayuningrum | Proceedings of the
International Conference on Applied
Science and Health from
scholar.google.co.id 2 hours ago
Worcester, South Africa from
scholar.google.co.za 7 hours ago
Bangkok, Thailand viewed
Proceedings of the International
Conference on Applied Science and Health

CASE STUDY AT PERMATAHATI HOSPITAL NIAU,

INDONESIA

(<http://publications.inschool.id/index.php/icash/article/view/7>)

Hetty Ismainar, Sandi Iljanto, Efrianti Efrianti

KNOWLEDGE AND MOTIVATION OF WOMAN IN REPRODUCTIVE AGE GIVEN HEALTH EDUCATION ABOUT EARLY DETECTION OF CERVICAL CANCER

(<http://publications.inschool.id/index.php/icash/article/view/8>)

Arum Estiyani, Sigit Ambar W, Ima Syamrotul, Wulan Margiana

PREGNANCY EXERCISES AND DELIVERY PROCESS IN MOTHERS GIVING BIRTH AT SUMOWONO HEALTH CENTER SEMARANG REGENCY

(<http://publications.inschool.id/index.php/icash/article/view/9>)

Dwi Okta Diarini, Yuliaji Siswanto, Heni Hirawati Pranoto, Ima Syamrotul, Wulan Margiana, Hamdiah Hamdiah

FACTORS AFFECTING THE OCCURRENCE CARIES DENTAL ON ELEMENTARY SCHOOL STUDENTS IN SD N PADANGSARI II BANYUMANIK SEMARANG

(<http://publications.inschool.id/index.php/icash/article/view/10>)

Hermien Nugraheni, Tri Wiyatini, Maria Okta Afa

THE POPULATION OF FLIES IN CIKOLOTOK LANDFILL, PASAWAHAN DISTRICT, PURWAKARTA REGENCY, INDONESIA

(<http://publications.inschool.id/index.php/icash/article/view/11>)

Danang Wahansa Sugiarto, Retno Hestningsih, Rully Rahadian

THE EVALUATION OF EARLY INITIATION BREASTFEEDING PRACTICE in Dr. mohammad hoessin

hospital palembang

(<http://publications.inschool.id/index.php/icash/article/view/12>)

Nuswil Bernolian, Amal C. Sjaaf

ASSOCIATION OF PREMENTRUAL SYNDROME TO STRESS INCIDENT AMONG XI GRADERS IN YOGYAKARTA, INDONESIA

(<http://publications.inschool.id/index.php/icash/article/view/13>)

Aisya Maharani Destiyi, Erianda Nur Destiyi, Dhaby Kusnia Utami, Destiyi

**SHOULDER FLEXIBILITY IN COLOR GUARD PLAYER
FOLLOWING POSTERIOR SHOULDER STRETCHING
AND MUSCLE ENERGY TECHNIQUE**

(<http://publications.inschool.id/index.php/icash/article/view/14>)

Tria Fitri Nurjani, Hilmi Zadah Faidlullah

**THE RELATIONSHIP BETWEEN AGE AND PARITY WITH
MYOMA UTERI IN DR. H. SOEWONDO HOSPITAL
KENDAL**

(<http://publications.inschool.id/index.php/icash/article/view/15>)

Dian Kusumaningtyas, Sari Ardiyanti, Norwidya Priansiska, Winda Windiyani

**NURSE'S ATTITUDE TOWARD PATIENT SAFETY POLICY
IN BALI ROYAL HOSPITAL, INDONESIA:
INDIVIDUALIZED APPROACH USING HEALTH BELIEF
MODEL**

(<http://publications.inschool.id/index.php/icash/article/view/16>)

Dewa Ayu Dyah Widya, Adang Bachtiar, Dumilah Ayuningtyas, Vetty Yulianty Permanasari

**A QUALITATIVE STUDY: EVALUATION OF WAITING
TIME IN REGISTRATION FROM HUMAN RESOURCES
WITH MALCOM BALDRIGE APPROACH**

(<http://publications.inschool.id/index.php/icash/article/view/17>)

Sukaria Susana Br. Ginting, Adang Bachtiar

**FACTORS INFLUENCING PATIENT SATISFACTION A
SYSTEMATIC REVIEW**

(<http://publications.inschool.id/index.php/icash/article/view/18>)

Edwin Zakaria

**TEACHERS AS AGENTS OF CHANGE: SCHOOL-BASED
DIAGNOSIS AND TREATMENT OF MALARIA
POSITIVELY IMPACTS CHILD MORBIDITY**

(<http://publications.inschool.id/index.php/icash/article/view/19>)

Ronald Mukisa, Andrew Macnab, Sharif Mutabazi, Rachel Steed

HOME BASED CARE BY PROVIDING PREVENTION OF

MOTHER- TO-CHILD TRANSMISSION (PMTCT)

HANDBOOK ON WOMEN'S PERCEPTION OF HIV/AIDS

PREVENTION IN MOTHER TO CHILD IN PURWOKERTO

<http://publications.inschool.id/index.php/icash/article/view/20>

Walid Walid, Dina Indrati Dyah Sulistyowati, Mardiyono Mardiyono, Ratifah Ratifah

THORAX MULTI-SLICE COMPUTER TOMOGRAPHY

(MSCT) EXAMINATION TECHNIQUE IN THE CASE OF

MEDIASTINUM TUMOR AT RADIOLOGY INSTALATION

OF SEMARANG DISTRICT GENERAL HOSPITAL

<http://publications.inschool.id/index.php/icash/article/view/21>

Ike Mayasari, Hermina Sukmaningtyas, Ardi Soesilo Wibowo, Aris Santjaka, M. Choerul Anwar, Leny Latifah

PREGNANT EXERCISE INFLUENCE ON THE BABY'S

BIRTH WEIGHT AND POSTPARTUM HEMORRHAGE

<http://publications.inschool.id/index.php/icash/article/view/22>

Siti Fatimah, M. Zen Rahfiludin, Apoina Kartini

KNOWLEDGE AS DETERMINANTS INCREASE CLEAN

AND HEALTHY LIVING BEHAVIORS AMONG STUDENTS

IN GENERAL PRIMARY SCHOOL 07 LANDAU-LEBAN

SUB DISTRICT MELAWI IN 2015

<http://publications.inschool.id/index.php/icash/article/view/23>

Sriwidodo Sriwidodo, Santosa Santosa

COST EFFECTIVENESS AND EFFICIENCY ANALYSIS OF

HOSPITAL WASTEWATER TREATMENT PLANT: A

SYSTEMATIC REVIEW

<http://publications.inschool.id/index.php/icash/article/view/24>

Catherine Maname Uli Nainggolan, Vetty Yulianty Permanasari

EFFECT OF HEAT STRESS AND NUTRITION STATUS ON

WORKER FATIGUE AT TRADITIONAL MUSIC GAMELAN

INDUSTRY

<http://publications.inschool.id/index.php/icash/article/view/25>

Lusi Ismayenti

POTENTIAL CHEMOPREVENTIVE AGENT: STUDY OF

**APOPTOSIS IN THE EXTRACTS OF SPONGE-
ASSOCIATED FUNGI FROM YOGYAKARTA AGAINST
CERVICAL CANCER HeLa CELL LINE**

<http://publications.inschool.id/index.php/icash/article/view/26>

Eka Ramadhani, Fajar Priyambada, Abrory Agus Cahya Pramana, Aditya Nur Subchan, Gian Aditya Pertiwi, Raden Aditya Aryandi Setiawibawa, Hendy Eka Putra, Nur Rofika Ayu Shinta Amalia, Nastiti Wijayanti

**THE BENEFITS OF AUTOMATED DISPENSING MACHINE
AS SOLUTIONS FOR HOSPITAL PHARMACY IN
INDONESIA: A SYSTEMATIC REVIEW**

<http://publications.inschool.id/index.php/icash/article/view/27>

Haryman Utama Suryadinata

**SCOURING-RUSH HORSETAIL'S (Equisetum hyemale)
CAPABILITY TO REDUCE DETERGENT, COD AND
PHOSPHAT (PO₄) LEVELS OF LAUNDRY
WASTEWATERIN PURWOKERTO IN 2016**

<http://publications.inschool.id/index.php/icash/article/view/28>

Hari Rudijanto Indro Wardono, Sugeng Abdullah, Zaeni Budiono

**FACTORS RELATED WITH HOSPITAL INFORMATION
SYSTEM (HIMS) POOR PERFORMANCE FROM USER'S
EVALUATIONS THOROUGH MALCOLM BALDRIGE
CONCEPT IN KERTHA USADA HOSPITAL SINGARAJA-
BALI**

<http://publications.inschool.id/index.php/icash/article/view/29>

I Wayan Parna Arianta

POSTPARTUM CARE IN CENTRAL JAVA TRADITION

<http://publications.inschool.id/index.php/icash/article/view/30>

Ita Rahmawati

**BODY WEIGHT EFFECT ON JOINT SPACE WIDTH AND
TIBIO FEMORAL ANGLE OF KNEE JOINT
MEASUREMENT FOR OSTEOARTHRITIS DETECTION
USING IMAGEJ**

<http://publications.inschool.id/index.php/icash/article/view/31>

Agung Nugroho Setiawan, Suryono Suryono, Sugiyanto Sugiyanto, Fatimah Fatimah, Gatot Murti Wibowo

**OPTIMIZATION OF R-FACTOR AT GRAPPA PARALLEL
ACQUISITION TECHNIQUE ON THE IMAGE
INFORMATION T2 AXIAL BRAIN MRI**

<http://publications.inschool.id/index.php/icash/article/view/32>

Saifudin Saifudin, Hermina Sukmaningtyas, Rini Indrati, Aris Santjaka

**RELATIONSHIP BETWEEN EARLY MOBILIZATION AND
FIRST URINARY ELIMINATION ON MOTHER
POSTPARTUM**

<http://publications.inschool.id/index.php/icash/article/view/33>

Fulatul Anifah, Rizki S Emilia, Syuhrotut Taufiqoh, Nurul F Hidayati

**COMPARISON TRANSCUTANEOUS ELECTRICAL NERVE
STIMULATION KINESIO TAPING AND DECREASING TO
SCALE BACK PAIN IN PREGNANT WOMEN UNDER
THIRD TRIMESTER IN PUBLIC HEALTH DISTRICT
JUWIRING KLATEN, INDONESIA**

<http://publications.inschool.id/index.php/icash/article/view/34>

Sri Wahyuni, Lilik Hartati, Novita P. Dewi, Jusmala Sari

**RELATIONSHIP OF EDUCATION, FAMILY INCOME,
COMPLIANCE AND PROCEDURE CONSUMPTION OF
IRON TABLET TO ANEMIA AMONG PREGNANT
WOMEN**

<http://publications.inschool.id/index.php/icash/article/view/35>

Septi Indah Permata Sari, Aris Noviani, Sri Nuriyaty Masdiputri, Nurul Inayah

**RELATIONSHIP BETWEEN MOTHER'S PARTICIPATION
IN SUPPORT GROUPS WITH EXCLUSIVE**

**BREASTFEEDING PRACTICE IN PUSKESMAS UMBUL
HARJO I YOGYAKARTA, INDONESIA**

<http://publications.inschool.id/index.php/icash/article/view/67>

Nur Laela, Siti Naili Ilmiyani, Etni Dwi Astuti, Warsiti Warsiti

**THE CORRELATION AMONG DURATION OF ORAL
CONTRACEPTION WITH THE INCIDENCE OF MELASMA
IN SUMBERWUDI, LAMONGAN, EAST JAVA,
INDONESIA**

INDONESIA

(<http://publications.inschool.id/index.php/icash/article/view/37>)

Dina Sulviana Damayanti, Putu Irma Pratiwi, Gracea Petricka

**THE RELATIONSHIP OF FAMILY SUPPORT TO
MOTIVATION (INTENTION) FOR MEDICAL TREATMENT
IN PATIENTS WITH CERVICAL CANCER IN LIGAR
MEDIKA CLINIC, WEST JAVA - INDONESIA**

(<http://publications.inschool.id/index.php/icash/article/view/38>)

Aulia Ridla Fauzi, Sri Yuniarti

**STUDENTS COPING MECHANISM TOWARD STRESS IN
WRITING SCIENTIFIC PAPERS AT SARI MULIA
MIDWIFERY ACADEMY BANJARMASIN, INDONESIA**

(<http://publications.inschool.id/index.php/icash/article/view/39>)

Widya Astutik, Aulia Rahmi

**FACTORS ASSOCIATED WITH IRON ANEMIA
DEFICIENCY IN CHILDREN AGED 12 TO 36 MONTHS IN
PUBLIC HEALTH CENTER JATILAWANG, BANYUMAS
CENTRAL JAVA**

(<http://publications.inschool.id/index.php/icash/article/view/40>)

Sawitri Dewi, Purnomo Suryantoro, Sulistyaningsih Sulistyaningsih

**EFFECT OF VARIATION IN THE NUMBER OF THICK
SLAB ON THE SCAN TIME AND IMAGE INFORMATION
ON THE EXAMINATION OF MAGNETIC RESONANCE
CHOLANGIOPANCREATOGRAPHY (MRCP)**

(<http://publications.inschool.id/index.php/icash/article/view/41>)

Ni Putu Rita Jeniyanthi, Leny Latifah, Donny Kristanto Mulyantoro,
Sudiyono Sudiyono, Faisal Amri

**IMPLEMENTATION AND EVALUATION OF BREAST
CARE TO THE CHILDBED MOTHER IN COMBINED
WARD OF PUSKESMAS TEGALREJO YOGYAKARTA,
INDONESIA**

(<http://publications.inschool.id/index.php/icash/article/view/42>)

Rosmawati Rosmawati, Fitri H. Susanto, Retno Purwanti

**EFFECTIVENESS OF PREGNANCY EXERCISE ON PAIN
REDUCTION AMONG WOMEN IN THE FIRST STAGE OF**

REDUCTION AMONG WOMEN IN THE FIRST STAGE OF LABOR

(<http://publications.inschool.id/index.php/icash/article/view/43>)

Septa Sari, Dwi Handayani, Pratiwi Puji, Nurhidayah Nurhidayah

THE DESIGN OF RADIOLOGY VIEWING BOX USING POTENTIOMETER SYSTEM

(<http://publications.inschool.id/index.php/icash/article/view/44>)

Anak Agung Aris Diartama, Susy Suswaty, Win Priantoro, Sudiyono Sudiyono, Sugiyanto Sugiyanto, Muhammad Choeroel Anwar, Leny Latifah, Aris Santjaka, Faisal Amri, Donny Kristanto Mulyantoro

CONSTRUCTION DESIGN OF AN ASSISTING TOOL FOR IMMOBILIZATION IN THORAX AND ABDOMEN EXAMINATION ON PEDIATRIC PATIENTS

(<http://publications.inschool.id/index.php/icash/article/view/45>)

Arif Budiman, Rini Indrati, M. Choerul Anwar, Sudiyono Sudiyono, Jeffri Ardiyanto, Donny Kristanto Mulyantoro, Leny Latifah

RISK FACTORS OF BIRTH ASPHYXIA IN PKU MUHAMMADIYAH HOSPITAL, BANTUL

(<http://publications.inschool.id/index.php/icash/article/view/46>)

Eka Riana, Fitria Yulastini, Umi Khasanah

CORRELATION BETWEEN MOTIVATION AND STUDENTS' ACHIEVEMENT IN MIDWIFERY CARE AND DELIVERY PROGRAM IN AISYIYAH UNIVERSITY YOGYAKARTA

(<http://publications.inschool.id/index.php/icash/article/view/47>)

Fitria Yulastini, Novita Puspita Dewi, Dwi Handayani, Gracea Petricka

THE RELATIONSHIP BETWEEN KNOWLEDGE OF HEPATITIS B-0 IMMUNIZATION AND HEPATITIS B-0 IMMUNIZATION TIMING IN JETIS PRIMARY HEALTH CENTRE, YOGYAKARTA, INDONESIA

(<http://publications.inschool.id/index.php/icash/article/view/48>)

Nindya Mayangsari, Sari Ardiyanti

INFLUENCE OF KEGEL GYMNASTICS ON PRIMIGRAVIDA PREGNANCY TOWARDS THE INCIDENCE OF A PERINEAL RUPTURE IN BASIC

ESSENTIAL OBSTETRIC CARE NEONATES SIIDAKARTA

ESSENTIAL OBSTETRIC CARE NEONATES SURABAYA,

INDONESIA

(<http://publications.inschool.id/index.php/icash/article/view/49>)

Umi Khasanah, Fitria Yulastini

**RELATIONSHIP BETWEEN KNOWLEDGE, ATTITUDE,
AND PRACTICE WITH APPLICATION**

**DOCUMENTATION PARTOGRAPH BY MIDWIFERY
STUDENTS OF BUNGA KALIMANTAN BANJARMASIN**

(<http://publications.inschool.id/index.php/icash/article/view/50>)

Aulia Rahmi, Widya Astutik

**KNOWLEDGE OF SIDE EFFECTS AND ITS ASSOCIATION
TO COMPLIANCE IN IRON TABLETS CONSUMPTION
AMONG THIRD TRIMESTER PREGNANT WOMEN**

(<http://publications.inschool.id/index.php/icash/article/view/51>)

Nurhidayah Nurhidayah, Dwi Handayani, Pratiwi Puji Lestari, Fitria Yulastini

**THE RELATIONSHIP BETWEEN FAMILY SUPPORTS
TOWARDS THE EARLY COMPLEMENTARY FEEDING
FOR 0-6 MONTHS BABIES IN PUBLIC HEALTH CENTER,
SEWON I BANTUL, INDONESIA**

(<http://publications.inschool.id/index.php/icash/article/view/52>)

Apriani Tiasna, Dhesi Ari Astutik

**RELATIONSHIP BETWEEN LEARNING MOTIVATION TO
LEARNING ACHIEVEMENT AMONG MIDWIFERY
STUDENTS IN IN 'AISYIYAH UNIVERSITY YOGYAKARTA,
INDONESIA**

(<http://publications.inschool.id/index.php/icash/article/view/53>)

Jusmala Sari, Lilik Hartati, Novita Puspita Dewi, Isti Chana Zuliyati

**THE RELATIONSHIP BETWEEN WEIGHT INCREASES
WITH UPPER ARM CIRCUMFERENCE AMONG THIRD
TRIMESTER PREGNANT WOMEN IN YOGYAKARTA,
INDONESIA**

(<http://publications.inschool.id/index.php/icash/article/view/54>)

Deby Kurnia Utami, Pratiwi Puji Lestari, Ajeng Maharani Pratiwi

**THE DURATION OF PERINEAL WOUND HEALING
BETWEEN RASTE AND INTEDDI IDTEN SITI IDE AMONG**

**BETWEEN BASTE AND INTERRUPTED SUTURE AMONG
POSTPARTUM MOTHERS IN BANTUL, YOGYAKARTA,
INDONESIA**

(<http://publications.inschool.id/index.php/icash/article/view/55>)

Isti Chana Zuliyati, Umu Hani Edi Nawangsih, Dian Pratiwi, Ajeng Hayuning Tiyas

**THE RELATIONSHIP BETWEEN EMOTIONAL
INTELLIGENCE AND ACADEMIC ACHIEVEMENT OF
MIDWIFERY STUDENTS IN STIKES MEDIKA CIKARANG,
INDONESIA**

(<http://publications.inschool.id/index.php/icash/article/view/56>)

Ajeng Hayuning Tiyas, Dian Pratiwi, Istichana Zuliyati

**THE INFLUENCE OF DEEP BREATHING RELAXATION
TECHNIQUES TO DECREASE PAIN LEVELS IN THE
MOTHERS INPARTU ACTIVE PHASE OF THE FIRST
STAGE AT KERTHA USADA HOSPITAL SINGARAJA**

(<http://publications.inschool.id/index.php/icash/article/view/57>)

Putu Irma Pratiwi, Dina Sulviana Damayanti, Grace Petricka

**THE IMPACT OF COMPLEMENTARY FEEDING TYPE ON
THE NUTRITION STATUS OF INFANTS 6 TO 12 MONTHS
OF AGE IN SUBURBAN SEMARANG INDONESIA**

(<http://publications.inschool.id/index.php/icash/article/view/58>)

Suyatno Suyatno

**FARMER EMPOWERMENT IN REDUCING EXPOSURE
AND RESIDUAL PESTICIDES IN VEGETABLES: A CROSS
SECTIONAL STUDY AT KUTAI KARTANEGARA**

DISTRICT, INDONESIA

(<http://publications.inschool.id/index.php/icash/article/view/59>)

Ryan Ningsih, Ratih Wirapuspita

**MODE OF DELIVERY, HOSPITAL OWNERSHIP AND
PREDICTORS MATERNITY LENGTH OF STAY IN TWO
HOSPITALS IN JAKARTA**

(<http://publications.inschool.id/index.php/icash/article/view/60>)

Celih Octavari

**NURSES' ROLES IN HEALTH PROMOTION PRACTICE: A
SYSTEMATIC REVIEW**

(<http://publications.inschool.id/index.php/icash/article/view/61>)

Budi Widiyanto

**THE ASSOCIATION BETWEEN KNOWLEDGE AND IRON
TABLET CONSUMPTION AMONG PREGNANT WOMEN
IN PONDOK KACANG, SOUTH TANGERANG CITY,
INDONESIA**

(<http://publications.inschool.id/index.php/icash/article/view/63>)

Siti Riptifah Tri Handari, Munaya Fauziah, Nirmala Harahap, Mohammad
Ainul Maruf

**THE ASSOCIATION BETWEEN HIV AND AIDS
KNOWLEDGE AND UPTAKE OF HIV TESTING AMONG
SEXUALLY ACTIVE YOUNG POPULATION AGE 15-24 IN
DISTRICT MERAUKE, PAPUA PROVINCE, INDONESIA**

(<http://publications.inschool.id/index.php/icash/article/view/64>)

Nurul Azmi

**THE EFFECT OF STUDENTS' RESPONSE IN USING
PROBLEM BASED LEARNING WITH SIMULATION
TOWARD STUDENTS' ACHIEVEMENT (LIGHT
CONCEPT)**

(<http://publications.inschool.id/index.php/icash/article/view/75>)

Ary Norsaputra, Johansyah Johansyah



YAYASAN ALIANSI CENDEKIAWAN INDONESIA THAILAND

Headquarter: Jl. Meranti Timur Dalam IV No.35 Padangsari, Banyumanik, Semarang, Jawa Tengah, Indonesia

ICASH-A19

**THORAX MULTI-SLICE COMPUTER TOMOGRAPHY (MSCT)
EXAMINATION TECHNIQUE IN THE CASE OF MEDIASTINUM
TUMOR AT RADIOLOGY INSTALATION OF SEMARANG DISTRICT
GENERAL HOSPITAL**

**Ike Mayasari^{1*}, Hermina Sukmaningtyas², Ardi Soesilo Wibowo¹, Aris Santjaka¹, M.
Choerul Anwar¹, Leny Latifah¹.**

¹Postgraduate Imaging Diagnostic Program, Semarang Health Polytechnic, Semarang, Indonesia

²Department of Radiology, Doctor at Kariadi Central Hospital, Semarang, Indonesia

*Corresponding author's email: ikmay96@gmail.com

ABSTRACT

Background: Thorax Multi-slice computer tomography (MSCT) scan examination requires contrast medium to image the difference in density with the surrounding tissue. The contrast images is largely determined by the volume of contrast, injection rate and injection methods. Thorax CT scan is performed by slice thickness of 5-10 mm. Meanwhile, it should use the routine slice thickness of 10 mm. Slice thickness of 8-10 mm of coronal and sagittal images require reconstruction by thin slices of 1-1.5 mm and subsequently by applying 3D.

Aims: This is to analyse the volume of contrast and slice thickness used in the examination of tumor mediastinum by thorax MSCT examination.

Methods: This research used descriptive qualitative design with case study approach, described and explained systematically, related to the procedure of Thorax MSCT examination technique in the case of mediastinum tumor with 3 samples of 3 patient and assessment performed by three radiologist as respondents.

Results: This study indicates the success of the use of proper contrast of 80 cc and slice thickness of 2-3 mm to observe lesions of mediastinal tumor.

Conclusion: Thorax MSCT examination in the case of mediastinum tumor should use contrast 80 cc and slice thickness of 2-3 mm to observe lesions of mediastinal tumor and coronal and sagittal axial slices, because the sagittal slice can show the lymphadenopathy enlargement so that the mediastinum tumor is clearly visible. The print out or filming results should be included the MPR or 3D to show the presence or absence of bone destruction and metastases.

Keywords: Thorax MSCT, Mediastinum Tumor, Contrast medium, Slice Thickness

INTRODUCTION

Thorax CT scan examination technique is a radiological examination technique to obtain anatomical information of cross-sectional or cross-axial slices of the thorax. Mediastinum CT scan cannot be separated from the examination of the thorax cavity, so abnormalities that will be examined in mediastinum are abnormalities found in the thorax cavity itself. Additionally, abnormalities that can be observed through Thorax CT Scan are mediastinum tumor, aneurysm, and abscesses, lesions on hilar or mediastinal or aortic surgery [1]. Important process that involves the mediastinum includes emphysema, bleeding and infection and many types of primary tumors and cysts. Systemic disorders such as metastatic carcinoma and many granulomatous diseases can also be involved in the mediastinum. Lesions which are primarily derived from the esophagus, trachea, heart and major blood

vessels are usually associated with a specific organic compounds involved rather than the mediastinum [2].

Examination of mediastinum tumor in the thorax cavity is to obtain information on the location, type and size and metastases of the tumor. These examinations require contrast medium which aims to see the difference in density with the surrounding tissue. The quality of images produced with the use of contrast medium is largely determined by the volume of contrast, injection rate and injection methods. The volume of contrast medium used in a Thorax CT Scan on mediastinum tumor is as much as 80-150 ml, the injection rate is 2-3 ml/sec with automatic injector, and the contrast volume used is between 80-100ml [3].

Thorax CT scan is performed by using slice thickness of 5-10 mm. Meanwhile, it should use the routine slice thickness of 10 mm. Slice thickness of 8-10 mm of coronal and sagittal images require reconstruction by thin slices of 1-1.5 mm and subsequently by applying 3D [4]. Thick slices can be between 5-10 mm depending on the size of lung lesion or make a combination of 10 mm in the area with no lesion and thin slices in the area of the lesion. Coronal and sagittal slices are obtained by MPR technique and thin slice between 2-3 mm is necessary [5].

Based on the observations at Radiology Installation of Semarang District General Hospital, Thorax MSCT examination procedure in all cases one of which mediastinum tumor is performed by using 50 cc of contrast medium, with axial and coronal slices alone and do not use sagittal and thin slice MPR and 3D on the area of abnormality. From the difference in examination technique between Radiology Installation in Semarang District General Hospital and the existing theories regarding the various uses of contrast medium and recommended slice thickness in the Thorax MSCT examination procedure in the case of mediastinum tumor. This study is to analyse the volume of contrast and slice thickness used in the examination of tumor mediastinum.

METHODS

This study was a descriptive study with case study approach. The subjects of this study were 3 patients with thorax MSCT request in the case of mediastinum tumor, 3 radiographers and a 2 radiologist, 1 sender doctor. Data were collected in April 2013 and were resumed in July 2013.

The data collection method used was the author held a direct observation on the Thorax CT scan in the case of Mediastinum Tumor at Radiology Installation of Semarang District General Hospital, conducted direct interviews with radiographers and radiologists. The interviews were related to the subject matters, including collection of the data included radiographs, the request letter of CT-scan, photographs readings and other records related to the Thorax MSCT examination in the case of mediastinum tumor at Radiology Installation of Semarang District General Hospital. The data were collected in the form of interview transcripts and then were reduced. After data reduction open coding was carried out by analyzing them based on observations and interviews with respondents and data collection from observations. Coding was done in an effort to clarify the validity of the data collected. Coding was done to facilitate the analysis results describing so the author could draw conclusions.

RESULTS

Procedures

a. Patient preparation

Patient 1, 2 and 3 had the same preparation that is the guideline for Thorax MSCT examination in the case of mediastinal tumor in Radiology Installation of Semarang District General Hospital. The patient must fasting 6 hours before the test, bring the laboratory results of Blood Urine

Nitrogen (BUN) and creatinine serum (Sc). The lab results of urea, creatinine in 3 patients were normal, patient 1 had urea of 28.0 mg/dl and creatinine of 0.6 mg/dl; patient 2 had urea of 30.0 mg/dl and creatinine of 0.5 mg/dl; patient 3 had urea of 25,0 mg/dl and creatinine of 0.8 mg/dl. The patients' clothes were changed with a gown. Objects that can cause artifacts on the area to be examined (thorax) such as necklace and bra were removed. Before the examination the patients were asked to fill out an informed consent as an approval to perform MSCT examination by using contrast medium, and received a brief explanation of the examination procedure.

b. Tools and materials preparation

Tools and materials used in the Thorax MSCT examination in patients with mediastinum tumor are as follows: MSCT machine of Philip Brilliance 16 slices with kV max of 150 kV and mA max of 300 mA. A single syringe Mallinckrodt Injector was used, blankets, central oxygen, infusion standard, fixation devices, agfa printer, CT Scan films, Iopamiro contrast medium with the concentration of 300, 10 ml of NaCl.

c. Patient position

The patient position was supine on an exam table with both hands above his head and the patient was covered and fitted by fixation devices (straps) on the patient's body with his feet near the gantry (feet first). Mid Sagittal Plane (MSP) of the body was arranged parallel to the longitudinal indicator lights and Mid Coronal Plane (MCP) was arranged parallel to the horizontal indicator lights.

d. Scanning technique

After setting the position of the patient then the next step was to enter patient data into the computer data entry included: name, age, gender, number of CT scans, body weight, clinical diagnosis, sender doctor, radiologist reading the results, radiographer performing the examination, the type of inspection and the patient's position when he or she come in the gantry. After the patient data were entered, then arrangements of the axial slices were made with the slice thickness of 7mm with lung apex to the diaphragm/supra-renal, Scanning was performed pre contrast and post contrast.

e. Filming technique

After the post-contrast scanning then it was reproduced and printed as many as 20 images on one sheet of film and it took 3-4 sheets of film for pre and post contrast for axial and coronal slices.

Thorax MSCT examination

Shown in Figure 1, in Patient 1, mild tracheal deviation to the right, the narrowing of the trachea was invisible. The anterior mediastinum masses of DD thymoma/lymphoma. The main bronchus left was not narrowed, but the bronchus branching to the lower lobe of left pulmonary showed narrowing because it was depressed by a mass, and caused atelectasis at the entire lower left pulmonary. The whole left hemi thorax pleura seemed thickened mainly in the medial part near the mass of 2.2 cm and pleura in posterior-lateral part of the left of 1 cm. The heart was not enlarged but only seemed thickened on the left ventricular wall of 1 cm, while the right atrial wall was not thickened. Massive left pleural effusion, invisible bone destruction.

Recorded as in Figure 2, in Patient 2, in 1, 2, 3 and 6 segments of the right pulmonary: an image of infiltrates with the cavity and broncho-grams water therein in accordance with the image of active pulmonary tuberculosis. There was solid mass filled the superior mediastinum. There was a narrowing of the right superior lobar bronchus.

Figure 3 shown suspected tumor on left pulmonary of patient 3. Multiple infiltrates were scattered throughout the dextra or sinistra pulmonary. There was an image of solid multiple in the

mediastinum. Bronchiectasis in the upper field on some portion of left lung pleura was thickened. There was no lymphadenopathy in the thorax cavity. Invisible bone destruction.

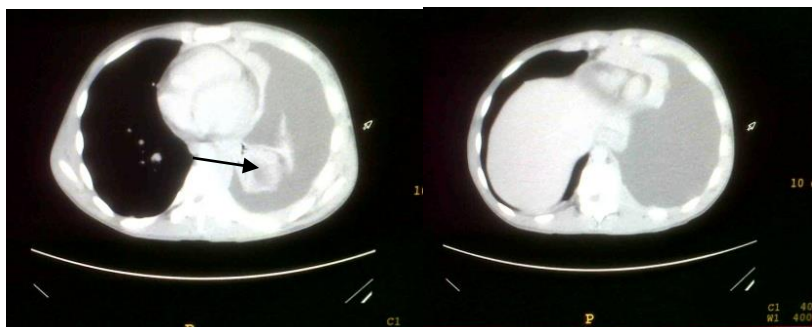


Figure 1. The 6th and the 8th slice scanning result at patient 1. The arrow points the tumor

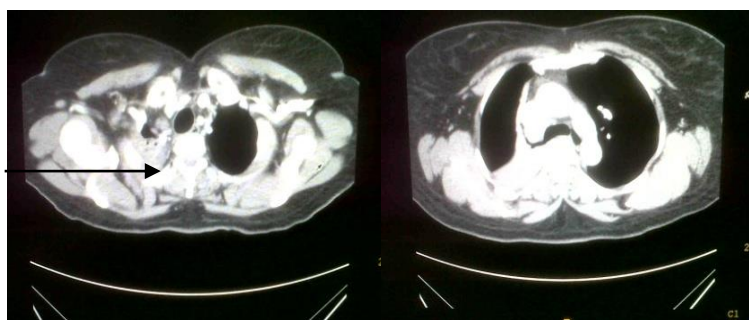


Figure 2. The 2nd slice and the 4th slice scanning results at patient 2. The arrow points the tumor

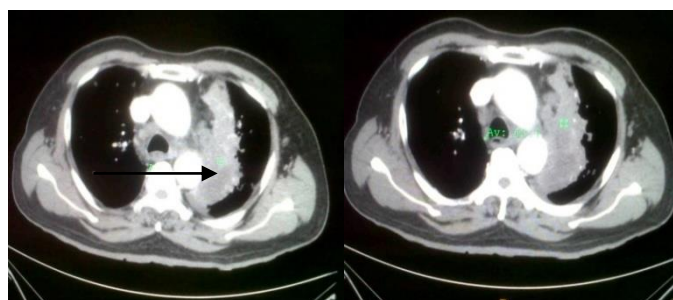


Figure 3. The 4th slice and the 6th slice scanning result at patient 3. The arrow points the tumor

DISCUSSION

Thorax MSCT examination technique in the case of Mediastinum Tumor at Radiology Installation of Semarang District General Hospital only used axial and coronal slices alone. In the opinion of the author, to better see abnormalities and tumor mass one should use axial, coronal and sagittal slices. Axial and coronal slices can present an image of broncho-vascular on the right and left lung, how is the fibrosis and consolidation of the lung ground glass and irregular thickening of the left/right pleura and the existence of visible nodules or masses or tumors or other pathological lesions. Soft tissues such as the axillary and malignant lesions, aortic arch, hilum, coronary artery, aorta

pulmonary, lung parenchyma, pleura, bone destruction. Sagittal slices show nodules, lesions and lymphadenopathy in the thorax cavity because the sagittal slices will be obvious, usually the presence of mass is followed by lymphadenopathy enlargement. Preferably sagittal slice should be added in MSCT Thorax so that it can show the lymphadenopathy enlargement of the mediastinum tumor.

Thorax MSCT examination technique in the case of Mediastinum Tumor at Radiology Installation of Semarang District General Hospital used contrast medium volume of 50 cc by using Iopamiro Iodine concentration of 300 with flow rate of 2,8ml/sec. According to PDSRI Thorax CT-scan should use contrast medium volume of 80-150 cc. According to the author the volume of contrast medium injected, the time of injection rate and the concentration of iodine used greatly affect a tumor to show maximum enhancement so that the image is more optimal. It is characterized by the increase in Hounsfield Unit value of the tumor, because the tumor vascularization is very much, the original appearance of vascular that is gray or gray scale may become white when iodine contrast is injected and if it is measured, it would increase the original HU of 20HU to be 1000 HU. This description will hyper dense and equitable if all the tissues in the tumor are filled with contrast medium. Contrast medium which is evenly distributed in the tissues is determined from the number and volume of contrast injected.

Provision of contrast medium was in a flow rate of 3-4ml/sec required iodine with standard concentration (300-350). Provision of contrast medium was in a flow rate of 2,5-3ml/sec required high concentration of iodine (350-370) to provide a clear distinction between vascular and the other surrounding tissues, especially in arterial area and intraluminal abnormalities. According to PDSRI Thorax CT-scan should use contrast medium volume of 80-150 cc [10]. According to the author, to get better results, we should use contrast medium volume of at least 80 cc or according to the weight of the patient, and use a high iodine concentration of 370 to provide a good enhancement to the tumor.

Thorax MSCT examination technique in the case of Mediastinum Tumor at Radiology Installation of Semarang District General Hospital did not use thin slices MPR. According to the authors, Thorax CT scan for diagnosis is better using MPR, 3D and ROI. To see mass or lung lesions, one should use coronal and sagittal slices with a thin slice of 2-3 mm. Using thin reconstruction of 1-1.5 mm with 3D applications is more informative. To see nodules and lesions by using 2-3 mm will clarify the mediastinum tumor. 3D can also be used to see whether there is bone destruction and metastasis of the tumor. This is different from the theory according bontranger routine 10 mm slice thickness can not show bone destruction and disorder.

CONCLUSION

Thorax MSCT examination technique in the case of Mediastinum Tumor at Radiology Installation of Semarang District General Hospital in this study was made by using a contrast medium volume of 50 cc, the flow rate of 2.8 ml/sec with iodine concentration of 300 and it could show abnormalities of mediastinum tumor. Thorax MSCT examination technique in the case of Mediastinum Tumor at Radiology Installation of Semarang District General Hospital which only used sagittal and coronal slices alone could diagnose, saved the use of CT-Scan film. Thorax MSCT did not use thin slice because it could reveal the location and size of the tumor and mediastinum tumor metastases.

Thorax MSCT examination should use contrast medium of at least 80 cc. Thorax MSCT examination in the case of mediastinum tumor should use coronal and sagittal axial slices, because the sagittal slice can show the lymphadenopathy enlargement so that the mediastinum tumor is clearly visible. The print out or filming results should be included the MPR or 3D to show the presence or absence of bone destruction and metastases.

REFERENCES

- [1] Rasad. Radiologi Diagnostik. Edisi ke dua. FK Universitas Indonesia. 2011
- [2] Bontrager K. *Textbook of Radiographic Positioning and Related Anatomy*. Fifth Edition. Mosby : Missouri. 2001
- [3] Nesseseth, Roland. *Prosedures dan Documentation for CT and MRI*. Medical Publishing Division State University Hays : Kansas. 2000
- [4] Kirchner J. *Chest Radiology A Resident's Manual. second edition*. Thieme. New York. 2011
- [5] Mathias, Galansky. *Spiral and Multislice Computed Tomography of the body*. New York. 2003
- [6] Jaengsri. *CT Protokol Radiology Department*. Takshin Hospital Bangkok. 2004
- [7] Sholeh M. Peranan Pengukuran HU terhadap Stagging tumor pada MSCT Thorax. Politeknik Kemenkes Semarang. 2012
- [8] Budyatmoko. Standar Pelayanan Radiologi. Bina husada Jakarta. 2005
- [9] Basmajian, JV. *Grant's Method of Anatomy*. Binapura Aksara: Jakarta. 2003
- [10] Hofer. *CT Teaching Manual a Systematic Approach to CT Reading*. New York. 2010
- [11] Tortorici MR., Patrick JA. *Advanced Radiographic and Angiographic Procedures*. FA Davis Company :Philadelphia. 1995